

# SIRUI

## SIRUI Photo and Video Support Series

SIRUI , Capturing Your Imagination



Founded in 2001, Guangdong SIRUI Optical Co.,Ltd. is famous at home and abroad, which professionally researches, develops, produces and sells shooting equipment, including optical lenses, camera support, lighting equipment, etc. So far, SIRUI has established an impressive customer service network around the world, as well as over 300 sales outlets and terminal showrooms. SIRUI, capturing your imagination!



# SIRUI

# CATALOGUE

---

## Photo Tripod and Monopod

ST Series Tripods-----	02
T-0S Series Lightweight Reverse-Folding Tripod Kits-----	03
A Series Tripod Kits-----	05
ET Series Tripod Kits -----	06
Traveler Photo Series -----	07
Traveler X Series Tripod Kits -----	08
T Series Multifunction Tripod Kits-----	09
MT Series Scenery Tripod Kit -----	10
W Series Tripods -----	11
RX Series Tripods-----	12
R-4214E Geared Center Column Tripod-----	13
Two in One Series Tripods -----	14
3T Series Table Top Tripod Kit-----	15
P Series Portable and Convenient Monopods-----	16
P Series Monopod Accessories-----	17
P-FS/FL Series Three in One Monopod-----	18

## Video Tripod and Monopod Kit

ST Series Tripod Kits-----	20
T-0S Series Lightweight Outdoor Travel Tripod Kits-----	21
Pilot Series Tripod Kits-----	22
ET Series Tripod Kits-----	23
Traveler Video Series -----	24
RX Series Tripod Kits -----	25
CT-3204+CH20 Outdoor Camouflage Series Tripod Kit-----	26
SH Broadcast Series Video Tripod Kits-----	27
DT-06 Heavy Duty Video Tripod Dolly-----	28
Rapid System Video Tripods-----	29
Quick-Release Handle for 75mm Half Ball-----	29
Rapid System Video Tripods--	30
P-FS/FL Video Monopod Kits -----	31

## Head Series

Ball Head Series -----	33
Fluid Video Heads Series -----	37
Gimbal Head Series-----	39
Two-Dimensional Tilt Head-----	40
FD-01 Four-Dimensional Head-----	41

## Camera Cage Series

Full Camera Cage for Sony FX3/FX30 -----	43
Full Camera Cage for Panasonic LUMIX S5II/S5IIX -----	44
Full Camera Cage for FUJIFILM X-H2/H2S -----	44

## Accessories Series

HA-77 Retractable Arm-----	46
LE-60 Leveling Base-----	46
Quick Release Baseplate Series-----	46
Compatible Baseplate Series-----	47
MS18 Macro Focusing Rail-----	47
Alien Series-----	48
Telescope Accessories Series-----	49
GC-1 Rifle Clamp-----	50

## Humidity Control Cabinet

HC Series Electronic Humidity Control Cabinets-----	52
IHS Series Electronic Humidity Control and Safety Cabinets-----	53



## Understand SIRUI Tripods Model Number

**S** } Tripod Series  
**T** }

**|**  
**2** — Tube Legs Number  
The larger the number, the larger the tube leg diameter

**2** — Material Type  
0: Aluminum, 2: Carbon Fiber

**4** — Leg Sections



1 Series Tube Legs

2 Series Tube Legs

3 Series Tube Legs

4 Series Tube Legs

# Photo Tripod and Monopod



# ST Series

## Tripods (Born for Mirrorless Cameras)

- Lightweight carbon fiber construction.
- Saving space with carbon fiber triangle center column.
- Removable and inverted center column.
- Waterproof.
- 1/4" and 3/8" screw ports.
- Metal spikes.



Triangle Center Column



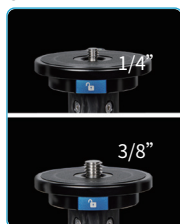
Removable Center Column



Inverted Center Column



1/4" and 3/8" Screw Ports



SIRUI Design Patent (ST-224)

## Tripod Kits



ST-124+ST-10X



ST-125+ST-10X



ST-224+ST-20

Model	Material	Compatible Head	Sections	Tube Dia. (mm/inches)	Weight (kg/lbs)	Max.Load (kg/lbs)	Retracted Height (mm/inches)	Min.Height (mm/inches)	Height (mm/inches)	Max Height (mm/inches)	Angle Adjustment(°)
ST-124	Carbon Fiber	ST-10X	4	17.5/0.69-26.5/1.04	1.2/2.6	12/26.5	480/18.9	375/14.8	1290/50.8	1580/62.2	22-55-85
ST-125	Carbon Fiber	ST-10X	5	14.5/0.57-26.5/1.04	1.2/2.6	12/26.5	420/16.5	291/11.5	1285/50.6	1500/59	22-55-85
ST-224	Carbon Fiber	ST-20	4	18.6/0.73-29.4/1.16	1.4/3.09	15/33.07	520/20.47	430/16.93	1400/55.12	1750/68.9	22-55-85
Model	Material	Sections	Tube Dia. (mm/inches)	Weight (kg/lbs)	Max.Load (kg/lbs)	Retracted Height (mm/inches)	Min.Height (mm/inches)	Height (mm/inches)	Max Height (mm/inches)	Angle Adjustment(°)	
ST-124+ST-10X	Carbon Fiber	4	17.5/0.69-26.5/1.04	1.66/3.66	12/26.5	480/18.9	461/18.15	1376/54.17	1666/65.59	22-55-85	
ST-125+ST-10X	Carbon Fiber	5	14.5/0.57-26.5/1.04	1.66/3.66	12/26.5	420/16.5	377/14.84	1371/53.98	1586/62.44	22-55-85	
ST-224+ST-20	Carbon Fiber	4	18.6/0.73-29.4/1.16	1.95/4.3	15/33.07	610/24.01	520/20.47	1490/58.66	1840/72.44	22-55-85	

# T-0S Series with Ballhead

## Lightweight Reverse-Folding Tripod Kits

- Compact and 180° reverse-folding legs.
- Removable center column for ultra low shooting and stability.
- Hook.
- Bubble level.



T-005SK+B-00K

T-025SK+B-00K



Reverse-Folding Legs



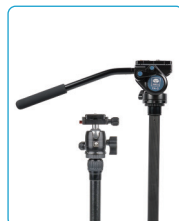
Removable Center Column



Hook



Bubble Level



B-00K/VA-5

Model	Material	Sections	Tube Dia. (mm/inches)	Weight (kg/lbs)	Max.Load (kg/lbs)	Folded Height (mm/inches)	Min.Height (mm/inches)	Height (mm/inches)	Max Height (mm/inches)	Angle Adjustment(°)
T-005SK+B-00K	Aluminum	5	10/0.39-22/0.87	1.1/2.43	5/11.02	310/12.2	150/5.91	1030/40.55	1370/51.57	21-51-81
T-025SK+B-00K	Carbon Fiber	5	10/0.39-22/0.87	1/2.2	6/13.23	310/12.2	150/5.91	1030/40.55	1370/51.57	21-51-81

# T-0S Series with Ballhead

## Lightweight Reverse-Folding Tripod Kits

- Compact and 180° reverse-folding legs.
- Convertible center column.
- Inverted center column.
- Hook.
- Bubble level.



T-004SK+B-00K



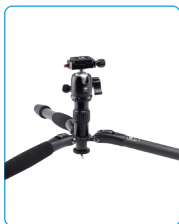
T-024SK+B-00K



Reverse-Folding Legs



Long Center Column



Short Center Column



Hook



Bubble Level

Model	Material	Sections	Tube Dia. (mm/inches)	Weight (kg/lbs)	Max.Load (kg/lbs)	Folded Height (mm/inches)	Min.Height (mm/inches)	Height (mm/inches)	Max Height (mm/inches)	Angle Adjustment(°)
T-004SK+B-00K	Aluminum	4	13/0.51-22/0.87	1.2/2.65	5/11.02	400/15.75	210/8.27	1240/48.82	1470/57.87	21-51-81
T-024SK+B-00K	Carbon Fiber	4	13/0.51-22/0.87	1/2.2	6/13.23	400/15.75	210/8.27	1240/48.82	1470/57.87	21-51-81



# A Series

## Tripod Kits (Entry Level Series)

- 180° reverse-folding legs.
- Easy conversion to a monopod.
- Inverted center column.
- Bubble level.
- Budget friendly.



A-1005+Y-10



A-1205+Y-11



Monopod



Inverted Center Column



180° Reverse-Folding Legs



Bubble Level

Model	Material	Sections	Tube Dia. (mm/inches)	Weight (kg/lbs)	Max. Load (kg/lbs)	Folded H (mm/inches)	Retracted H (mm/inches)	Min H (mm/inches)	Height (mm/inches)	Max Height (mm/inches)	Monopod H (mm/inches)	Leg Angles(°)
A - 1005+Y-10	Aluminum	5	13/0.51-25/0.98	1.2/2.64	10/22	360/14.2	445/17.5	260/10.2	1120/44.1	1430/56.3	325/12.8-1075/42.3	20-52-83
A - 1205+Y-11	Carbon Fiber	5	13/0.51-25/0.98	1.0/2.2	10/22	370/14.6	455/17.9	260/10.2	1110/43.7	1420/55.9	330/13.0-1075/42.3	23-68-88

# ET Series

## Tripod Kits (Flip Lock Series)

- 180° reverse-folding legs.
- Flip leg lock system.
- Convertible center column.
- Retractable spikes. (ET-2004, ET-2204)
- Inverted center column.



ET-1004+E-10

ET-1204+E-10

ET-2004+E-20

ET-2204+E-20



180° Reverse-Folding Legs



Convertible Center Column



Inverted Center Column



Flip leg Lock System



Retractable Spikes  
(ET-2004, ET-2204)

Model	Material	Compatible Head	Sections	Tube Dia. (mm/inches)	Weight (kg/lbs)	Max. Load (kg/lbs)	Folded H (mm/inches)	Retracted H (mm/inches)	Min H (mm/inches)	Height (mm/inches)	Max Height (mm/inches)	Leg Angles(*)
ET-1004	Aluminum	E-10	4	16/0.6-25/1.0	1.3/2.9	8/17.6	420/16.5	480/18.9	130/5.1	1160/45.7	1400/55.1	20-52-83
ET-1204	Carbon Fiber	E-10	4	16/0.6-25/1.0	1.1/2.4	8/17.6	420/16.5	480/18.9	130/5.1	1160/45.7	1400/55.1	20-52-83
ET-2004	Aluminum	E-20	4	19/0.7-28/1.1	1.6/3.5	12/26.5	430/16.9	500/19.7	135/5.3	1215/47.8	1450/57.1	21-52-81
ET-2204	Carbon Fiber	E-20	4	19/0.7-28/1.1	1.3/2.9	12/26.5	430/16.9	500/19.7	135/5.3	1215/47.8	1450/57.1	21-52-81

Model	Material	Colour	Safety Lock	Rotation	Scale	Base Dia. (mm/inches)	Ball Dia. (mm/inches)	Height (mm/inches)	Weight (kg/lbs)	Max. Load (kg/lbs)
E-10	Aluminum	Black	Yes	360°	Yes	43/1.7	29/1.1	90/3.5	0.3/0.7	8/17.6
E-20	Aluminum	Black	Yes	360°	Yes	50/2.0	36/1.4	100/3.9	0.36/0.8	12/26.5

# Traveler Photo Series

Your Capable Traveling Partner

- 180° reverse-folding legs.
- Detachable center column.
- Semi-automatic leg angle adjustment buttons.
- 360° panning ball head.



Traveler 5AX



Traveler 5CX



180° Reverse-Folding Legs



Semi-Automatic Leg Angle Adjustment Buttons



Detachable Center Column



360° Panning Ball Head

Model	Material	Sections	Tube Diameter (mm/inches)	Min.Height (mm/inches)	Max.Height (mm/inches)	Retracted Height (mm/inches)	Folded Height (mm/inches)	Weight (kg/lbs)	Max.Load (kg/lbs)
Traveler 5AX	Aluminum	5	10-22/0.39-0.87	90/3.54	1320/51.97	535/21.1	315/12.4	0.87/1.9	5/11.0
Traveler 5CX	Carbon Fiber	5	10-22/0.39-0.87	90/3.54	1320/51.97	535/21.1	315/12.4	0.72/1.58	6/13.2

# Traveler X Series

## Tripod Kits

- 3K carbon fiber construction. Weight only 660g.
- Quick legs setup.
- Quick-release threaded stud (1/4" Screw, 3/8" Screw).
- Convertible center column.
- 180° reverse-folding legs.
- Inverted center column.
- 1/4" screw ports.
- Hook.

### Traveler X-I

AT-125+B-00K



### Traveler X-II

AT-125+E-10



3K Carbon Fiber



180° Reverse-Folding Legs



Quick Legs Setup



Convertible Center Column



Inverted Center Column



1/4" Screw Ports



Quick-Release Threaded Stud (1/4" Screw, 3/8" Screw)



Hook

Model	Material	Compatible Head	Sections	Max.Tube Dia. (mm/inches)	Min.Tube Dia. (mm/inches)	Max.Height (mm/inches)	Min.Height (mm/inches)	Folded H (mm/inches)	Angle Adjustment	Weight (kg/lbs)	Max.Load (kg/lbs)
AT-125	Carbon Fiber	B-00K/E-10	5	25/1.0	13/0.5	1450/57.1	120/4.7	350/13.8	21-52-83	0.66/1.5	10/22.0

Model	Material	Colour	Safety Lock	Rotation	Scale	Ball Dia. (mm/inches)	Height (mm/inches)	Weight (kg/lbs)	Max. Load (kg/lbs)
E-10	Aluminum	Black	Yes	360°	Yes	29/1.1	90/3.5	0.3/0.7	8/17.6
B-00K	Aluminum	Black	Yes	360°	Yes	29/1.1	70/2.8	0.2/0.44	10/22.05

# T Series

## Multifunction Tripod Kits

- 180° reverse-folding legs.
- Convertible center column.
- Inverted center column.
- Allen Key at the bottom of center column.
- Easy conversion to a monopod.
- Interchangeable steel spikes.
- Hook.
- 1/4" screw ports.
- Compatible with E-10 Panorama Ball Head or K-10II Friction Panorama Ball Head.



T-1005+E-10

T-1205+E-10

T-1005+K-10II

T-1205+K-10II



Convertible Center Column



180° Reverse-Folding Legs



1/4" Screw Ports



Inverted Center Column



Allen Key at the Bottom of Center Column



Easy Conversion to a Monopod



Interchangeable Steel Spikes



Hook



E-10



K-10II

Model	Material	Compatible Head	Sections	Max. Tube Dia. (mm/inches)	Min. Tube Dia. (mm/inches)	Max. Height (mm/inches)	Min. Height (mm/inches)	Retracted Height (mm/inches)	Angle Adjustment	Weight (kg/lbs)	Max. Load (kg/lbs)
T-1005	Aluminum	E-10/K-10II	5	26.5/1.04	14.5/0.57	1540/60.63	160/6.30	520/20.47	22-52-82	1.5/3.31	10/22.05
T-1205	Carbon Fiber	E-10/K-10II	5	26.5/1.04	14.5/0.57	1540/60.63	160/6.30	520/20.47	22-52-82	1.2/2.65	10/22.05

Model	Material	Colour	Safety Lock	Rotation	Scale	Base Dia. (mm/inches)	Ball Dia. (mm/inches)	Height (mm/inches)	Weight (kg/lbs)	Max. Load (kg/lbs)
E-10	Aluminum	Black	Yes	360°	Yes	43/1.7	29/1.1	90/3.5	0.3/0.7	8/17.6
K-10II	Aluminum	Black	Yes	360°	Yes	49/1.9	33/1.3	96/3.8	0.39/0.86	20/44.1

# MT Series

## Scenery Tripod Kit

- 180° reverse-folding legs.
- Easy conversion to a monopod.
- Inverted center column.
- Convertible 3/8" and 1/4" mounting screw.
- Interchangeable steel spikes.
- Hook.
- Double panorama ball head.



180° Reverse-Folding Legs



Easy Conversion to a Monopod



Inverted Center Column



Convertible 3/8" and 1/4" Mounting Screw



Interchangeable Steel Spikes



Hook



MT-2204+MT-20



MT-20

Model	Material	Sections	Max Tube Dia. (mm/inches)	Min Tube Dia. (mm/inches)	Min H (mm/inches)	Folded H (mm/inches)	Retracted H (mm/inches)	Max Height (mm/inches)	Monopod H (mm/inches)	Weight (kg/lbs)	Max Load (kg/lbs)
MT-2204+MT-20	Carbon Fiber	4	29.4/1.2	18.6/0.7	350/13.8	450/17.7	620/24.4	1550/61	1280-1600/50.4-63	2.01/4.4	15/33.1

# W Series

## Tripods (Outdoor Series)

- 180° reverse-folding legs.
- Inverted center column.
- Waterproof & dustproof twist leg locks.
- Easy conversion to a monopod.
- Convertible center column.
- Interchangeable steel spikes.



W-2004



W-2204

## SIRUI WPS Waterproof System



Waterproof



Dustproof



180° Reverse-Folding Legs



Interchangeable Steel Spikes



Inverted Center Column



Easy Conversion to a monopod



Convertible Center Column

Model	Material	Compatible Head	Sections	Tube Dia. (mm/inches)	Weight (kg/lbs)	Max. Load (kg/lbs)	Folded H (mm/inches)	Retracted H (mm/inches)	Min H (mm/inches)	Height (mm/inches)	Max Height (mm/inches)	Monopod H (mm/inches)	Leg Angles(*)
W-2004	Aluminum	K-20X/G-20KX	4	18.6/0.7-29.4/1.2	2.1/4.6	18/39.7	520/20.5	560/22	155/6.1	1470/57.9	1800/70.9	470/18.5-1770/69.7	22-52-82
W-2204	Carbon Fiber	K-20X/G-20KX	4	18.6/0.7-29.4/1.2	1.7/3.7	18/39.7	520/20.5	560/22	155/6.1	1470/57.9	1800/70.9	470/18.5-1770/69.7	22-52-82

# RX Series



## Tripods (Professional Series)

- R-3213X was honored 2018 Red Dot Design Award and 2018 German Design Award.
- Built-in flat base and 75mm ball base.
- No center column design.
- Detachable center column is designed to adjust height of the tripods for more shooting possibilities.
- The hook can be removed and used as Allen key.
- Interchangeable steel spikes.



R-2214X

R-4213X

R-4214X

R-5214X

R-5214XL



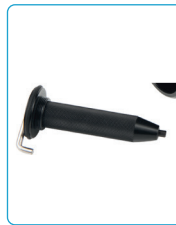
Built-in Flat Base and Ball Base



No Center Column Design



Detachable Center Column



Remove the Hook to Use as Allen Key



Interchangeable Steel Spikes

Model	Material	Compatible Head	Sections	Tube Dia. (mm/inches)	Weight (kg/lbs)	Max. Load (kg/lbs)	Retracted H (mm/inches)	Min H (mm/inches)	Height (mm/inches)	Max Height (mm/inches)	Leg Angles(°)
R-2214X	Carbon Fiber	K-20X/VA-5	4	18.6/0.7-29.4/1.2	1.6/3.5	18/39.7	510/20.1	115/4.5	1450/57.1	1830/72.0	22-52-82
R-3213X	Carbon Fiber	VH-10/PH-10	3	25.8/1.0-33/1.3	1.8/4.0	22/48.5	610/24.0	115/4.5	1400/55.1	1780/70.1	22-52-82
R-4213X	Carbon Fiber	K-40X/VH-15	3	28/1.1-36/1.4	2.2/4.9	25/55.1	660/26.0	105/4.1	/	1500/59.1	25-54-84
R-4214X	Carbon Fiber	K-40X/VH-15	4	24/0.9-36/1.4	2.2/4.9	25/55.1	550/21.7	90/3.5	/	1500/59.1	25-54-84
R-5214X	Carbon Fiber	K-40X/VH-15	4	28/1.1-40/1.6	2.5/5.5	30/66.1	580/22.8	90/3.5	/	1600/63.0	26-56-85
R-5214XL	Carbon Fiber	K-40X/VH-15	4	28/1.1-40/1.6	2.8/6.2	30/66.1	690/27.1	100/3.9	/	2000/78.7	26-56-85



# R-4214E

## Geared Center Column Tripod

- This tripod is suitable for supporting heavy camera setups, telescopes, precision measuring instruments, etc.
- The R-4214E tripod is tall, sturdy and stable and has a large tube diameter.
- Turn the crank handle with a single hand to precisely adjust the height of the center column. And the full travel distance is 250mm.
- Both top and bottom of the center column have mounting platform.
- Interchangeable steel spikes.



R-4214E



Large Tube Diameter



Crank Handle



Dual Mounting Platform



Interchangeable Steel Spikes

Model	Material	Sections	Max Tube Dia. (mm/inches)	Min Tube Dia. (mm/inches)	Min Height (mm/inches)	Height (mm/inches)	Max Height (mm/inches)	Retracted Height (mm/inches)	Weight (kg/lbs)	Max Load (kg/lbs)
R-4214E	Carbon Fiber	4	36/1.4	24/0.9	390/15.4	1535/60.4	1785/70.3	590/23.2	3.3/7.3	14/30.9

# Two in One Series Tripods

- Fixed base and leveling base into one.
  - The fixed base mode for perfect alignment.
  - The leveling base offers 15 degrees of leveling capability, making it easy to set up heavy gear on rough terrain.
- The bowl accepts any head that uses a 75mm bowl.
- Interchangeable steel spikes.
- Hook.
- 1/4" screw ports.



AR-3204



CT-3204



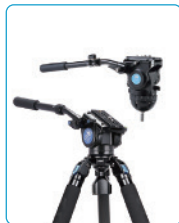
Two in One



Fixed Base



Leveling Base



Wide Compatibility



Interchangeable Steel Spikes



Hook



1/4" Screw Ports

Model	Material	Sections	Max Dia. (mm/inches)	Min Dia. (mm/inches)	Min H (mm/inches)	Height (mm/inches)	Retracted H (mm/inches)	Weight (kg/lbs)	Max Load (kg/lbs)
AR-3204	Carbon Fiber	4	33/1.30	22.2/0.87	120/4.72	1500/59.06	545/21.46	2.0/4.41	25/55.12
CT-3204	Carbon Fiber	4	33/1.30	22.2/0.87	120/4.72	1500/59.06	545/21.46	2.0/44.1	25/55.12

# 3T Series

## Table Top Tripod Kit

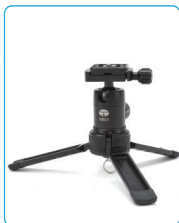
- Combination of professional table top tripod and selfie stick.
- Retractable & removable center column.
- Fold down the legs to hold easily.
- Compatible with mirrorless camera and mobile phone (mobile phone clip is not included).
- Strong Aluminum Alloy.
- Fold up the legs for compact size.
- Hook.



Table Top Tripod/Selfie Stick



Strong Aluminum Alloy



Retractable & Removable Center Column



Compact Size



Fold down the Legs



Hook



Mirrorless Camera / Mobile Phone



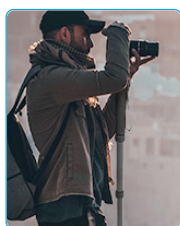
3T-35K

Model	Color	Material	Sections	Tube Dia. (mm/inches)	Weight (kg/lbs)	Max. Load (kg/lbs)	Retracted H (mm/inches)	Min H (mm/inches)	Height (mm/inches)	Max Height (mm/inches)
3T-35K	Black	Aluminum	2	13/0.5-16/0.6	0.22/0.5	4/8.8	160/6.3	51/2.0	187/7.4	272/10.7
Head Model			Dia. (mm/inches)	Height (mm/inches)		Weight (kg/lbs)		Max. Load (kg/lbs)		
3T-35			37/1.45	70/2.8		0.17/0.37		4/8.2		

# P Series

## Portable and Convenient Monopods

- Suitable for telephoto, outdoor and travel shooting.
- 6 sections for flexible height adjustment.
- Built-in wrist strap.
- Replaceable steel spikes.
- Built-in compass.
- Hook.



Suitable for Telephoto, Outdoor and Travel Shooting



6 Sections



Replaceable Steel Spikes



Built-in Wrist Strap



Built-in Compass



Hook



P-306



P-326

Model	Material	Sections	Tube Dia. (mm/inches)	Weight (kg/lbs)	Max. Load (kg/lbs)	Min H (mm/inches)	Max Height (mm/inches)
P-306	Aluminum	6	16/0.6-32/1.3	0.5/1.1	8/17.6	395/15.6	1560/61.4
P-326	Carbon Fiber	6	16/0.6-32/1.3	0.4/0.9	10/22.0	395/15.6	1560/61.4

# P Series

## Monopod Accessories

- If you own both P-306/P-326 monopod and P-FS/FL monopod, you can form the P-306/P-326 monopod and the tripod base of P-FS/FL monopod into a kit via the P-36 adapter.



Model	Min W (mm/inches)	Max H (mm/inches)	Weight (kg/lbs)	Load Capacity (kg/lbs)
P-36	42/1.65	94/3.7	0.16/0.353	10/22.05

- P-36 Kit is made up of SIRUI P-306 or P-326 that you have and an additional tripod base.
  - Quick release mounting platform.
  - The tripod base offers two positions.
  - Vertical notch is designed for portrait shooting.
  - Quick release mounting screw.
  - Tripod legs can be folded up or down.



Model	Min H (mm/inches) (P-36 attached)	Max H (mm/inches) (P-36 attached)	Weight (kg/lbs)	Load Capacity (kg/lbs)
P-36 Kit	235/9.25	298/11.73	0.77/1.70	10/22.05

# P-FS/FL

## Three in One Monopod Series

- Modular design - monopod, extension rod and tabletop tripod.
- Quick release system - quick release mounting screw, quick release tripod base and quick release mounting plate.
- The legs offer two position settings, and can be folded up or down for easy storage.
- 360° panning.
- 36° tilting.
- Steel spikes.



Three in One



Quick Release Design



360° Panning



Two Position Settings  
Folded up and down



Steel Spikes

Model	Material	Compatible Head	Sections	Max Tube Dia. (mm/inches)	Min Tube Dia. (mm/inches)	Max H (mm/inches)	Min H (mm/inches)	Max H without Tripod Base (mm/inches)	Min H without Tripod Base (mm/inches)	Weight (kg/lbs)	Max Load (kg/lbs)
P-325FS	Carbon Fiber	VA-5/VH-10	5	32/1.3	19/0.7	1400/55.12	570/22.44	1295/50.98	455/17.91	1.17/2.58	10/22.05
P-325FL	Carbon Fiber	VA-5/VH-10	5	32/1.3	19/0.7	1700/66.93	630/24.80	1595/62.80	515/20.28	1.20/2.65	10/22.05
P-424FS	Carbon Fiber	VA-5/VH-10	4	36/1.42	25/0.98	1600/63.00	650/35.60	1490/58.66	540/21.26	1.20/2.56	12/26.45
P-424FL	Carbon Fiber	VA-5/VH-10	4	36/1.42	25/0.98	1900/74.80	730/28.74	1790/70.47	610/24.01	1.25/2.75	12/26.45

# Video Tripod and Monopod Kit



# ST Series

## Tripod Kits (Born for Mirrorless Cameras)

- Saving space with carbon fiber triangle center column.
- Removable and inverted center column.
- Compatible with Fluid Video Head.
- 1/4" and 3/8" screw ports.
- Waterproof.
- Metal spikes.



ST-124+VA-5

ST-125+VA-5

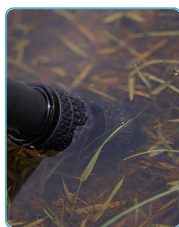
ST-224+VH-10



Inverted Center Column



Triangle Center Column



Waterproof



1/4" and 3/8" Screw Ports



Metal Spikes

Model	Material	Sections	Tube Dia. (mm/inches)	Weight (kg/lbs)	Max.Load (kg/lbs)	Retracted Height (mm/inches)	Min.Height (mm/inches)	Height (mm/inches)	Max Height (mm/inches)	Angle Adjustment(°)
ST-124+VA-5	Carbon Fiber	4	17.5/0.69-26.5/1.04	1.8/3.97	3/6.61	563/22.17	458/18.03	1373/54.06	1663/65.47	22-55-85
ST-125+VA-5	Carbon Fiber	5	14.5/0.57-26.5/1.04	1.8/3.97	3/6.61	503/19.8	374/14.72	1368/53.86	1583/62.32	22-55-85
ST-224+VH-10	Carbon Fiber	4	18.6/0.73-29.4/1.16	2.3/5.07	6/13.23	615/24.21	525/20.67	1495/58.86	1845/72.64	22-55-85



# T-0S Series with Video Head

## Lightweight Outdoor Travel Tripod Kits

- 180° reverse-folding legs.
- Removable center column for ultra low shooting.(T-005SK/T-025SK)
- Compatible with VA-5 Fluid Video Head.
- Convertible center column.(T-004SK/T-024SK)
- 360° panorama base, -60° ~ +90° tilt range.



T-004SK+VA-5

T-024SK+VA-5

T-005SK+VA-5

T-025SK+VA-5



180° Reverse-Folding Legs



Convertible Center Column  
(T-004SK/T-024SK)



Removable Center Column  
(T-005SK/T-025SK)



Compatible with VA-5  
Fluid Video Head



-60°~ +90° Tilt Range

Model	Material	Sections	Tube Dia. (mm/inch)	Weight (kg/lbs)	Max. Load (kg/lbs)	Folded Height (mm/inch)	Min. Height (mm/inch)	Height (mm/inch)	Max Height (mm/inch)	Angle Adjustment(°)
T-004SK+VA-5	Aluminum	4	13/0.51-22/0.87	1.6/3.53	3/6.61	410/16.14	223/8.78	1253/49.33	1483/58.39	21-51-81
T-024SK+VA-5	Carbon Fiber	4	13/0.51-22/0.87	1.4/3.09	3/6.61	410/16.14	223/8.78	1253/49.33	1483/58.39	21-51-81
T-005SK+VA-5	Aluminum	5	10/0.39-22/0.87	1.5/3.3	3/6.61	320/12.6	163/6.42	1043/41.06	1383/54.45	21-51-81
T-025SK+VA-5	Carbon Fiber	5	10/0.39-22/0.87	1.4/3.09	3/6.61	320/12.6	163/6.42	1043/41.06	1353/54.45	21-51-81

# Pilot Series

## Tripod Kits

- Strong Aluminum Alloy.
- Included short center column.
- Rubber sleeve.
- Metal spikes.
- Saving space with triangle center column.
- Inverted center column.
- Hook.
- 1/4"-20 or 3/8"-16 self-adaptive thread.



CT04+CT5  
Matte Green

GT04+GT5  
Metal Gray



Triangle Center Column



Rubber Sleeve



Inverted Center Column



Hook



Rubber Feet and Metal Spikes

Model	Material	Sections	Dia (mm/inches)	Weight (kg/lbs)	Max. Load (kg/lbs)	Min. Height (mm/inches)	Height (mm/inches)	Max. Height (mm/inches)	Retracted Height (mm/inches)
CT04/GT04	Aluminum	4	14.5/0.57-23.5/0.93	1,2/2.64	10/22.04	80/3.15	1150/45.28	1400/55.12	430/16.93

Model	Material	Size (mm/inches)	Weight (kg/lbs)	Max.Load (kg/lbs)	Counterbalance (kg/lbs)
CT5/GT5	Aluminum	300x120x83/11.81x4.72x3.27	0.6/1.32	3/6.61	1/2.20

# ET Series

## Tripod Kits (Flip Lock Series)

- 180° reverse-folding legs.
- Flip leg lock system.
- Compatible with VA-5 Fluid Video Head.
- Convertible center column.
- Retractable spikes. (ET-2004, ET-2204)
- Inverted center column.
- 360° panorama base, -60°~+90° tilt range.



ET-1004+VA-5

ET-1204+VA-5

ET-2004+VA-5

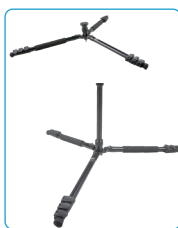
ET-2204+VA-5



VA-5 Fluid Video Head



-60°~+90° Tilt Range



Convertible Center Column



Flip Leg Lock System



Retractable Spikes  
(ET-2004/ET-2204)

Model	Material	Compatible Head	Sections	Tube Dia. (mm/inches)	Weight (kg/lbs)	Max. Load (kg/lbs)	Folded H (mm/inches)	Retracted H (mm/inches)	Min H (mm/inches)	Height (mm/inches)	Max Height (mm/inches)	Leg Angles(°)
ET-1004	Aluminum	VA-5	4	16/0.6-25/1.0	1.3/2.9	8/17.6	420/16.5	480/18.9	130/5.1	1160/45.7	1400/55.1	20-52-83
ET-1204	Carbon Fiber	VA-5	4	16/0.6-25/1.0	1.1/2.4	8/17.6	420/16.5	480/18.9	130/5.1	1160/45.7	1400/55.1	20-52-83
ET-2004	Aluminum	VA-5	4	19/0.7-28/1.1	1.6/3.5	12/26.5	430/16.9	500/19.7	135/5.3	1215/47.8	1450/57.1	21-52-81
ET-2204	Carbon Fiber	VA-5	4	19/0.7-28/1.1	1.3/2.9	12/26.5	430/16.9	500/19.7	135/5.3	1215/47.8	1450/57.1	21-52-81

Model	Material	Colour	Counterbalanced Weight(kg/lbs)	Safety Lock	Rotation	Base Dia. (mm/inches)	Tilt	Height (mm/inches)	Weight (kg/lbs)	Max. Load (kg/lbs)
VA-5	Aluminum	Black	1/2.2	Yes	360°	48/1.9	-60/+90°	83/3.3	0.6/1.3	3/6.6

# Traveler Video Series

Your Capable Traveling Partner

- 180° reverse-folding legs.
- 1/4" -20 accessory port.
- Semi-automatic leg angle adjustment buttons.
- Detachable center column.
- VA-5 Fluid Video Head.



Traveler VA

Traveler VC



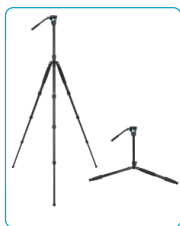
180° Reverse-Folding Legs



Semi-Automatic Leg Angle Adjustment Buttons



1/4" -20 Accessory Port



Detachable Center Column



VA-5 Fluid Video Head

Model	Material	Sections	Tube Diameter (mm/inches)	Min.Height (mm/inches)	Max.Height (mm/inches)	Retracted Height (mm/inches)	Folded Height (mm/inches)	Monopod Height (mm/inches)	Weight (kg/lbs)	Max.Load (kg/lbs)
Traveler VA	Aluminum	4	15-25.8/0.6-1.02	535/21.1	1675/65.9	635/25.0	555/21.9	510-1725/20.1-67.9	2.19/4.8	3/6.6
Traveler VC	Carbon Fiber	4	15-25.8/0.6-1.02	535/21.1	1675/65.9	635/25.0	555/21.9	510-1725/20.1-67.9	1.87/4.1	3/6.6

# RX Series

## Tripod Kits (For Birding & Wildlife Shooting)

- This is a professional video tripod kit for birding and wildlife.
- **VH-10 Fluid Video Head:**
  - Built-in handle for smooth operation.
  - Internal friction control systems for smooth shooting.
  - 360° panorama base, -70°~+90° tilt range.
- **PH-10 Gimbal Head:**
  - Suitable for telephoto camera or heavy equipment.
  - Lightweight carbon fiber construction.
  - Flexible height adjustment of the curved arm.
  - 360° panorama base.



R-3213X+VH-10



R-3213X+PH-10



VH-10



Handle



Hydraulic Damping



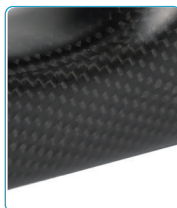
360° Panorama Base



PH-10



Suitable for Telephoto Camera or Heavy Equipment



Carbon Fiber



Smooth Operation



360° Panorama Base

Model	Material	Section	Tube Dia (mm/inches)	Retracted H (mm/inches)	Min H (mm/inches)	Height (mm/inches)	Max H (mm/inches)	Leg Position (°)	Weight (kg/lbs)	Max Load (kg/lbs)
R-3213X+PH-10	Carbon Fiber	3	25.8/1.02-33/1.3	782/30.79	287/11.3	1572/61.89	1952/76.85	22-52-82	2.78/6.13	15/33.07
R-3213X+VH-10	Carbon Fiber	3	25.8/1.02-33/1.3	705/27.76	210/8.27	1495/58.86	1875/73.82	22-52-82	2.7/5.95	6/13.23

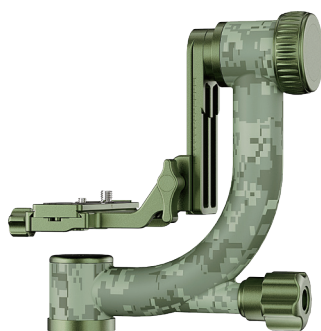
# CT-3204+CH20

## Outdoor Camouflage Series Tripod Kit

- This tripod is suitable for outdoor shooting, telephoto camera and heavy equipment.
- CH20 Camouflage Gimbal Head:
  - 360° panorama base, -60°~+150° tilt range.
  - Flexible height adjustment of the curved arm.



CT-3204+CH20



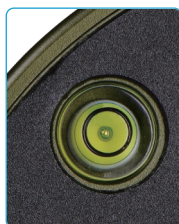
CH20



Aluminum Alloy



Large Tube Diameter



Bubble Level



Outdoor Camouflage Series Tripods Kit

Model	Material	Sections	Max Dia. (mm/inches)	Min Dia. (mm/inches)	Min H (mm/inches)	Height (mm/inches)	Retracted H (mm/inches)	Weight (kg/lbs)	Max Load (kg/lbs)
CT-3204	Carbon Fiber	4	33/1.30	22.2/0.87	120/4.72	1500/59.06	545/21.46	2.0/44.1	25/55.12
Model	Material	Rotation	Scale	Base Dia. (mm/inches)	Tilt	Width (mm/inches)	Height (mm/inches)	Weight (kg/lbs)	Max. Load (kg/lbs)
CH20	Carbon Fiber	360°	Yes	50/2.0	-60°/+150°	230/9.1	230/9.1	1.3/2.9	20/44.1

# SH Broadcast Series

## Video Tripod Kits

- SH05 tripod comes with a bowl of 60mm in diameter.
- SH15/SH25 tripod comes with a bowl of 75mm in diameter.
- SH25 tripod has detachable rubber feet and twin spikes.
- SH05/SH15 tripod comes with retractable spikes.
- Oversized leg lock for convenient operating.
- Multi-tube design for stability.
- Center spreader.



Bowl



Center Spreader



Multi-Tube Design



Leg Lock



Fluid Head  
(SH05 without Horizontal Adjustment)



Retractable Feet  
(SH05/SH15)



Twin Metal Spikes  
(SH25)

Model	Color	Material	Sections	Tube Dia. (mm/inches)	Weight (kg/lbs)	Max. Load (kg/lbs)	Retracted Height (mm/inches)	Min Height (mm/inches)	Max Height (mm/inches)
SH05	Black	Aluminum	3	14/0.55-23/0.91	3.2/7.05	6/13.3	754/29.69	710/27.95	1400/55.12
SH15	Black	Aluminum	3	14/0.55-18/0.71	3.6/7.94	10/22.0	825/32.48	782/30.79	1551/61.06
SH25	Black	Aluminum	3	14/0.55-18/0.71	4.0/8.82	10/22.0	959/37.76	916/36.06	1900/74.8

# DT-06

## Heavy Duty Video Tripod Dolly

- Provide smooth and fast movements for compatible video tripods.
- Lock or unlock the rubber wheel.
- Rubber buckle and locking screw.
- Strap design for compact size.



Safety Screw



Rubber Wheel



Buckle



Strap

Model	Dia.(mm/inches)	Weight(kg/lbs)	Load Capacity(kg/lbs)
DT-06	1110/43.7	2.92/6.44	50/110.23



# Rapid Series

## Rapid System Video Tripods

### Warning!

**Patent Number**  
 2023207541506  
 2023103666545  
 2023207880878

**Avoid Patent Infringement Do Not Infringe!**

### SVT75 Lite

- One-step height adjustment.
- Carbon fiber legs.
- Houseshoe/metal spikes.



SVT75 Lite

### SVT75 Pro

- Built-in QH-75 quick-release handle for 75mm half ball.
- Quick release.
- Carbon fiber legs.
- Center spreader.
- Horseshoe/metal spikes.



SVT75 Pro



One-Step Height Adjustment



Carbon Fiber Legs



Horseshoe/Metal Spikes



Quick-Release Handle for 75mm Half Ball



Center Spreader



Horseshoe/Metal Spikes

Model	Material	Sections	Dia (mm/inches)	Weight (kg/lbs)	Max Load (kg/lbs)	Retracted H (mm/inches)	Min H (mm/inches)	Max H Extend (mm/inches)	Adjust Degree with Center Spreader(°)	Adjust Degree without Center Spreader(°)
SVT75 Lite	Carbon Fiber	3	28/1.1-40/1.57	3.5/7.72	25/55.12	750/29.53	210/8.27	1530/60.24	21-36	22-50-78
SVT75 Pro	Carbon Fiber	3	28/1.1-40/1.57	4.3/9.48	25/55.12	750/29.53	210/8.27	1530/60.24	21-36	22-50-78

### QH-75

#### Quick-Release Handle for 75mm Half Ball

- Fast set up and break down.
- Rotate the handle counterclockwise 2 turns and press the button to pull out it.



QH-75

Model	Weight (kg/lbs)	Ball Head Dia. (mm/inches)
QH-75	0.32/0.71	75/0.71

# Rapid Series

Video Tripod Rapid System  
with SVH15 Video Fluid Head

## Warning!

**Patent Number**  
2022228341083  
2022113221312  
2023207859059

**Avoid Patent  
Infringement  
Do Not Infringe!**

- Side loading quick release plate.
- The pan and tilt counterbalance system can balance different camera size and weight.
- 7+0 steps of counterbalance, allowing load from 4 to 15kg.
- Hydraulic oil included for moving smoothly even at -40°C.
- Dual retractable handles.
- Dual retractable handles.

## Tripod Kits



SVT75 Lite+SVH15



SVT75 Pro+SVH15



Quick Release Plate



Dual handles



Base



Incremental Adjustment



Pan and Tilt Counterbalance System.

Model	Material	Sections	Dia (mm/inches)	Weight (kg/lbs)	Max Load (kg/lbs)	Retracted H (mm/inches)	Min H (mm/inches)	Max H Extend (mm/inches)	Adjust Degree with Center Spreader(°)	Adjust Degree without Center Spreader(°)
SVT75 Lite+SVH15	Carbon Fiber	3	28/1.1-40/1.57	7.2/15.87	15/33.07	1035/40.75	495/19.49	1815/71.46	21-36	22-50-78
SVT75 Pro+SVH15	Carbon Fiber	3	28/1.1-40/1.57	7.68/16.93	15/33.07	1035/40.75	495/19.49	1815/71.46	21-36	22-50-78

Model	Material	Counterbalance	Damping Adjustment	Panning	Tilting	Base Dia. (mm/inches)	Height (mm/inches)	Weight (kg/lbs)	Max Load (kg/lbs)
SVH15	Aluminum	7+0 Steps	Stepless Adjustment	360°	-70/+90°	90/3.54	285/11.22	3.7/8.16	4/8.82-15/33.07

# P-FS/FL

## Video Monopod Kits

- Modular design - monopod, extension rod and tabletop tripod in one.
- Quick release system - quick release mounting screw, quick release tripod base and quick release mounting plate.
- Two positions and reverse folding.
- Compatible with VA-5 Fluid Video Head/ VH-10 Fluid Video Head.
- 360° panning.
- 36° tilting.
- Steel spikes.



P-325FS+VA-5 P-325FL+VA-5 P-325FS+VH-10 P-325FL+VH-10 P-424FS+VA-5 P-424FL+VA-5 P-424FS+VH-10 P-424FL+VH-10



Modular Design



Quick Release Design



360° Panning



Two Positions & Reverse Folding



Metal Spikes

Model	Material	Compatible Head	Sections	Max Tube Dia. (mm/inches)	Min Tube Dia. (mm/inches)	Max H (mm/inches)	Min H (mm/inches)	Max H without Tripod Base (mm/inches)	Min H without Tripod Base (mm/inches)	Weight (kg/lbs)	Max Load (kg/lbs)
P-325FS	Carbon Fiber	VA-5/VH-10	5	32/1.3	19/0.7	1400/55.12	570/22.44	1295/50.98	455/17.91	1.17/2.58	10/22.05
P-325FL	Carbon Fiber	VA-5/VH-10	5	32/1.3	19/0.7	1700/66.93	630/24.80	1595/62.80	515/20.28	1.20/2.65	10/22.05
P-424FS	Carbon Fiber	VA-5/VH-10	4	36/1.42	25/0.98	1600/63.00	650/35.60	1490/58.66	540/21.26	1.20/2.56	12/26.45
P-424FL	Carbon Fiber	VA-5/VH-10	4	36/1.42	25/0.98	1900/74.80	730/28.74	1790/70.47	610/24.01	1.25/2.75	12/26.45

Model	Material	Colour	Counterbalanced Weight(kg/lbs)	Safety Lock	Rotation	Base Dia. (mm/inches)	Tilt	Height (mm/inches)	Weight (kg/lbs)	Max. Load (kg/lbs)
VA-5	Aluminum	Black	1/2.2	Yes	360°	48/1.9	-60/+90°	83/3.3	0.6/1.3	3/6.6
VH-10	Aluminum	Black	2/4.4	Yes	360°	65/2.6	-70/+90°	95/3.7	0.9/2.0	6/13.2



Head Series

# ST-10X

## Low Gravity Ball Head



ST-10X

- Arca-compatible QR plate.
- Integrate the panning lock and QR plate lock to work efficiently.
- Separate friction control knob for easy friction adjustment.
- Reposition the base locking knob 360° by pulling it out.



Model	Material	Colour	Safety Lock	Rotation	Scale	Base Dia. (mm/inches)	Ball Dia. (mm/inches)	Height (mm/inches)	Weight (kg/lbs)	Max.Load (kg/lbs)
ST-10X	Aluminum	Black	Yes	360°	Yes	50/2.0	36/1.4	86/3.4	0.46/1.0	20/44.1

# ST-20

## Low-Profile Ball Head



ST-20

- 360° panorama function can be achieved via the panning base and the panning clamp.
- The Universal Arca- swiss plate with anti-twist pins.
- Strong Aluminum Alloy.
- Pull and turn the 360° panning locking knob to change its position.



Model	Material	Colour	Diameter(mm/inches)	Height(mm/inches)	Weight(kg/lbs)	Max Load(kg/lbs)
ST-20	Aluminum	Black	40/1.57	90/3.54	0.55/1.21	35/77.16

## B-00K

### Ball Head



B-00K

- Convenient adjustment with the separate base lock and other locking knobs.
- SIRUI Unique Safety Locking System for precision and safety control.
- Wear-resistant rugged metal locking knobs.
- Arca-compatible SIRUI Quick Release Plate TY-C10.
- A faster adjustment by turning the large main locking knob.



Model	Material	Colour	Safety Lock	Rotation	Scale	Base Dia. (mm/inches)	Ball Dia. (mm/inches)	Height (mm/inches)	Weight (kg/lbs)	Max. Load (kg/lbs)
B-00K	Aluminum	Black	Yes	360°	Yes	29/1.1	/	70/2.8	0.2/0.44	10/22.05

## G-X Series

### Ball Head



G-10KX

- SIRUI Unique Safety Locking System for precision and safety control.
- Flexible adjustment of friction and locking force with the separate control knobs located on the base.
- Adjust the locking force with the SIRUI unique locking knobs to secure the equipments.
- Two Bubble Levels for fast horizontal and vertical adjustment.
- Arca-compatible SIRUI Quick Release Plate TY-50X.



Model	Material	Colour	Safety Lock	Rotation	Scale	Base Dia. (mm/inches)	Ball Dia. (mm/inches)	Height (mm/inches)	Weight (kg/lbs)	Max. Load (kg/lbs)
G-10KX	Aluminum	Black	Yes	360°	Yes	43/1.7	29/1.1	90/3.5	0.31/0.7	18/39.7
G-20KX	Aluminum	Black	Yes	360°	Yes	50/2.0	36/1.4	100/3.9	0.38/0.8	20/44.1

# K-X Series

## Ball Head



K-10X

- Rubber sleeve coated on Locking Knobs for precision and comfortable operation.
- SIRUI Unique Locking System prevents the camera from accidental sliding.
- The base lock and the ball lock with the friction dial located to control friction are separate for accurate adjustment.
- Three Bubble Levels for fast horizontal and vertical adjustment.
- Arca-compatible quick release plate.



Model	Material	Colour	Safety Lock	Rotation	Scale	Base Dia. (mm/inches)	Ball Dia. (mm/inches)	Height (mm/inches)	Weight (kg/lbs)	Max. Load (kg/lbs)
K-10X	Aluminum	Black	Yes	360°	Yes	49/1.9	33/1.3	96/3.8	0.39/0.86	20/44.1
K-20X	Aluminum	Black	Yes	360°	Yes	54/2.1	38/1.5	101/4.0	0.43/0.94	25/55.1
K-30X	Aluminum	Black	Yes	360°	Yes	60/2.4	44/1.7	109/4.3	0.55/1.2	30/66.1
K-40X	Aluminum	Black	Yes	360°	Yes	74/2.9	54/2.1	124/4.9	0.8/1.8	35/77.2

# K-II Series

## Ball Head



K-10II

- Metal knob.
- SIRUI Unique Safety Locking System.
- The base lock and the ball lock with the friction dial located to control friction are separate for accurate adjustment.
- Three Bubble Levels for fast horizontal and vertical adjustment.
- Arca-compatible quick release plate.



Model	Material	Colour	Safety Lock	Rotation	Scale	Base Dia. (mm/inches)	Ball Dia. (mm/inches)	Height (mm/inches)	Weight (kg/lbs)	Max. Load (kg/lbs)
K-10II	Aluminum	Black	Yes	360°	Yes	49/1.9	33/1.3	96/3.8	0.39/0.86	20/44.1
K-20II	Aluminum	Black	Yes	360°	Yes	54/2.1	38/1.5	101/4.0	0.43/0.94	25/55.1
K-30II	Aluminum	Black	Yes	360°	Yes	60/2.4	44/1.7	109/4.3	0.55/1.2	30/66.1
K-40II	Aluminum	Black	Yes	360°	Yes	74/2.9	54/2.1	124/4.9	0.8/1.8	35/77.2

# E Series

## Ball Head

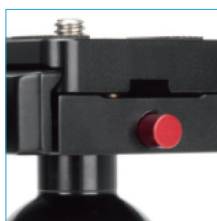
- SIRUI Unique Safety Locking System for precision and safety control.
- Convenient adjustment with the separate base lock and other locking knobs.
- Bubble Level for fast level adjustment.
- Arca-compatible quick release plate.
- Wear-resistant rugged metal locking knobs.



E-10



E-20



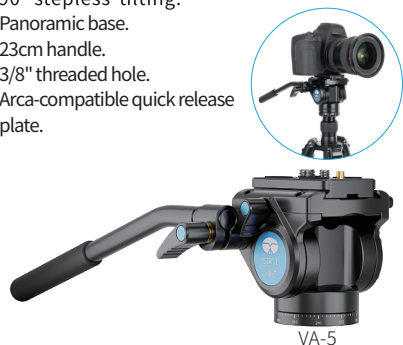
Model	Material	Colour	Safety Lock	Rotation	Scale	Base Dia. (mm/inches)	Ball Dia. (mm/inches)	Height (mm/inches)	Weight (kg/lbs)	Max. Load (kg/lbs)
E-10	Aluminum	Black	Yes	360°	Yes	43/1.7	29/1.1	90/3.5	0.3/0.7	8/17.6
E-20	Aluminum	Black	Yes	360°	Yes	50/2.0	36/1.4	100/3.9	0.36/0.8	12/26.5



## VA-5

### Fluid Video Head

- SIRUI Unique Double-Insurance Locking System prevents camera from accidental sliding.
- Include internal spring for improving counter balance and friction control system for smooth shooting.
- Two Bubble Levels for fast level adjustment.
- Lockable head with -60° to 90° stepless tilting.
- Panoramic base.
- 23cm handle.
- 3/8" threaded hole.
- Arca-compatible quick release plate.



VA-5

Model	Material	Colour	Counterbalanced Weight(kg/lbs)	Safety Lock	Rotation
VA-5	Aluminum	Black	1/2.2	Yes	360°
Base Dia. (mm/inches)	Tilt	Height (mm/inches)	Weight (kg/lbs)	Max. Load (kg/lbs)	
48/1.9	-60/+90°	83/3.3	0.6/1.3	3/6.6	

## VH Series

### Fluid Video Head

- SIRUI Unique Double-Insurance Locking System prevents camera from accidental sliding.
- Include internal spring for improving counter balance and friction control system for smooth shooting.
- Two Bubble Levels for fast level adjustment.
- Lockable head with -70° to 90° stepless tilting.
- Panoramic base.
- 30-47cm handle adjustment.
- 3/8" threaded hole.
- Arca-compatible quick release plate.



VH-10

Model	Material	Colour	Counterbalanced Weight(kg/lbs)	Safety Lock	Rotation
VH-10	Aluminum	Black	2/4.4	Yes	360°
VH-15	Aluminum	Black	4/8.8	Yes	360°
Base Dia. (mm/inches)	Tilt	Height (mm/inches)	Weight (kg/lbs)	Max. Load (kg/lbs)	
65/2.6	-70/+90°	95/3.7	0.9/2.0	6/13.2	
85/3.3	-70/+90°	122/4.8	1.7/3.7	10/22	

## VH-10X

### Fluid Video Head

- VH-10X Fluid Head includes a friction panning dial to turn it clockwise for friction control.
- SIRUI Unique Double-Insurance Locking System prevents camera from accidental sliding.
- Include internal spring for improving counter balance and friction control system for smooth shooting.
- Two Bubble Levels for fast level adjustment.
- Lockable head with -70° to 90° stepless tilting.
- Panoramic base.
- 30-47cm handle adjustment.
- 3/8" threaded hole.
- Arca-compatible quick release plate.



VH-10X

Model	Material	Colour	Counterbalance (kg/lbs)	Safety Lock	Rotation	Base Dia. (mm/inches)	Tilt	Height (mm/inches)	Weight (kg/lbs)	Max. Load (kg/lbs)
VH-10X	Aluminum	Black	2/4.4	Yes	360°	/	-70/+90°	130/5.1	1.2/2.6	4/8.8

# SVH15

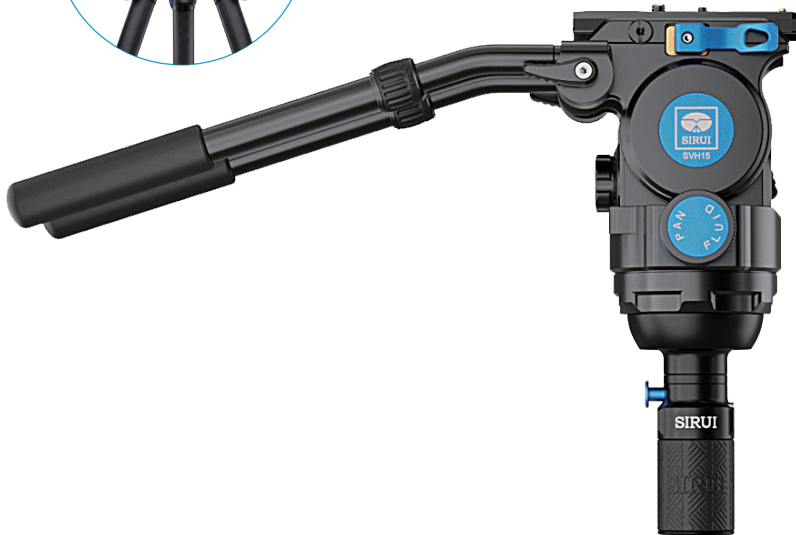
## Video Fluid Head

### Warning!

**Patent Number**  
 2022228341083  
 2022113221312  
 2023207859059

**Avoid Patent Infringement**  
**Do Not Infringe!**

- Side loading quick release plate.
- The pan and tilt counterbalance system can balance different camera size and weight.
- 7+0 steps of counterbalance, allowing load from 4 to 15kg.
- Hydraulic oil included for moving smoothly even at -40°C.
- Dual retractable handles.
- Dual retractable handles.



SVH15



Quick Release Plate



Dual Handles



Base



Incremental Adjustment



Pan and Tilt Counterbalance System.

Model	Material	Counterbalance	Damping Adjustment	Panning	Tilting	Base Dia. (mm/inches)	Height (mm/inches)	Weight (kg/lbs)	Max Load (kg/lbs)
SVH15	Aluminum	7+0 Steps	Stepless Adjustment	360°	-70/+90°	90/3.54	285/11.22	3.7/8.16	4/8.82-15/33.07

# Gimbal Head Series

- Construct the curved arm with high-strength and lightweight 8-layer carbon fiber.
- Lockable Gimbal Head with  $-60^{\circ}$  to  $+150^{\circ}$  stepless tilting.
- The lockable base is 360 degrees rotatable for panorama shots.
- 360 degrees rotatable scale with tilting and height adjustments.
- Flexible height adjustment of the curved arm.
- A quick attachment of the head to the tripod with a 3/8" screw.
- 120mm/4.724inches Arca-compatible quick release plate in rubber surface with 1/4" screw and 3/8" screw.



PH-10

PH-20

PH-30



Model	Material	Colour	Rotation	Scale	Base Dia. (mm/inches)	Tilt	Width (mm/inches)	Height (mm/inches)	Weight (kg/lbs)	Max. Load (kg/lbs)
PH-10	Carbon Fiber	Black	360°	Yes	50/2.0	$-60^{\circ}/+150^{\circ}$	208/8.2	172/6.8	0.98/2.2	15/33.1
PH-20	Carbon Fiber	Black	360°	Yes	50/2.0	$-60^{\circ}/+150^{\circ}$	230/9.1	230/9.1	1.3/2.9	20/44.1
PH-30	Carbon Fiber	Black	360°	Yes	50/2.0	$-60^{\circ}/+150^{\circ}$	260/10.2	250/9.8	1.4/3.0	25/55.1

# Two-Dimensional Tilt Head Series

## L-10



L-10

- SIRUI Unique Safety Locking System prevents the camera from accidental sliding.
- Flexible friction and locking force adjustments with the large rugged metal locking knob.
- Bubble Level for fast level adjustment.
- -90°~+90° stepless tilting.
- Easily attach the head to tripods with Arca-compatible quick release plate or a 3/8" screw.
- Arca-compatible quick release plate.



Head	Material	Colour	Safety Lock	Rotation	Scale	Base Dia. (mm/inches)	Tilt	Height (mm/inches)	Weight (kg/lbs)	Max. Load (kg/lbs)
L-10	Aluminum	Black	Yes	No	No	43/1.7	90°	87/3.4	0.33/0.7	15/33.1

## L-20S



L-20S

- SIRUI Unique Safety Locking System prevents the camera from accidental sliding.
- Flexible friction and locking force adjustments with the large rugged metal locking knob.
- 360° panorama base.
- -90°~+90° stepless tilting.
- Arca-compatible quick release plate.
- 3/8" threaded hole.



Head	Material	Colour	Safety Lock	Rotation	Scale	Base Dia. (mm/inches)	Tilt	Height (mm/inches)	Weight (kg/lbs)	Max. Load (kg/lbs)
L-20S	Aluminum	Black	Yes	360°	Yes	51/2.0	90°	103/4.1	0.44/1.0	25/55.1

# FD-01

## Four-Dimensional Head

- This head has four-dimensional adjustment function to ensure the accuracy of image composition :
  - Base panning 360°.
  - Two axes tilting -55°- +90°and -90°- +90°.
- Foldable handles for a compact fit to carry.

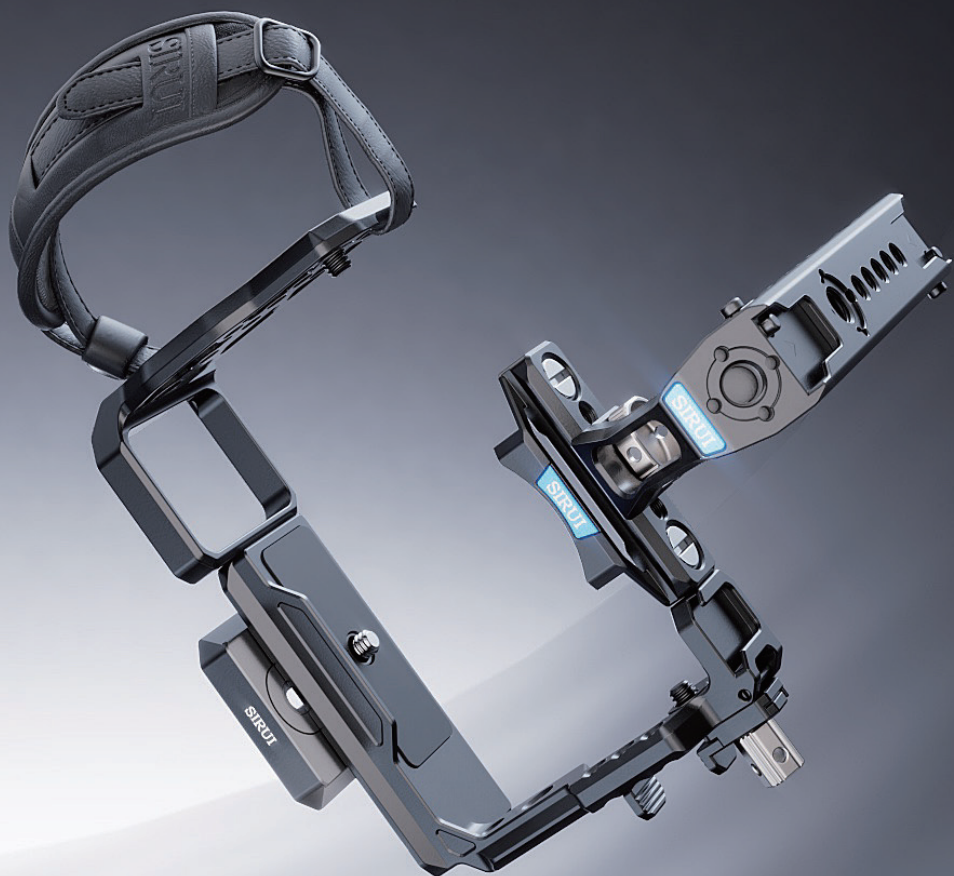


FD-01



Model	Material	Color	Safety Lock	Rotation	Scale	Diameter (mm/inches)	Panning	Tilt	Height (mm/inches)	Weight (kg/lbs)	Max. Load (kg/lbs)
FD-01	Aluminum/SUS304	Matte Black	Yes	360°	No	46/18.1	360°	-90°/+55°	119.5/4.7	0.77/1.69	10/22

# Camera Cage Series



# Full Camera Cage for Sony FX3/FX30



SC-FX3/30  
Camera Cage (Black)



SCH-FX3/30  
Camera Cage Kit (Black)



SC-FX3/30-G  
Camera Cage (Metal Gray)



SCH-FX3/30-G  
Camera Cage Kit (Metal Gray)

Compatible Camera: SONY FX3, SONY FX30

Model	Color	Material	Dimensions(mm/inches)	Cage(g/lbs)	Weight(g/lbs)	Compatible Camera
SC-FX3/30	Black	Aluminum	165*108.6*52/6.5*4.3*2.0	150/0.33	225±5/0.5±0.01	Sony FX3, Sony FX30
SCH-FX3/30	Black	Aluminum	165*173.6*140/6.5*6.8*5.5	150/0.33	385±5/0.85±0.01	Sony FX3, Sony FX30
SC-FX3/30-G	Metal Gray	Aluminum	165*108.6*52/6.5*4.3*2.0	150/0.33	225±5/0.5±0.01	Sony FX3, Sony FX30
SCH-FX3/30-G	Metal Gray	Aluminum	165*173.6*140/6.5*6.8*5.5	150/0.33	385±5/0.85±0.01	Sony FX3, Sony FX30

# Full Camera Cage for Panasonic LUMIX S5II/S5IIX



SC-S5M2 Camera Cage



SCH-S5M2 Kit  
(Camera Cage+Top Handle)

Compatible Camera : LUMIX S5II, LUMIX S5IIX

Model	Material	Dimensions(mm/inches)	Cage(g/lbs)	Weight(g/lbs)	Designed for
SC-S5M2	Aluminum	157.7*125.5*64.8/6.2*4.9*2.6	165/0.36	230±5/0.5±0.01	LUMIX S5II, LUMIX S5IIX
SCH-S5M2	Aluminum	190.5*157.7*140/7.5*6.2*5.5	165/0.36	390±5/0.86±0.01	LUMIX S5II, LUMIX S5IIX

# Full Camera Cage for FUJIFILM X-H2/H2S



SC-X-H2/H2S Cage



SCH-X-H2/H2S Kit

Compatible Camera : FUJIFILM X-H2, FUJIFILM X-H2S

Model	Material	Dimensions(mm/inches)	Cage(g/lbs)	Weight(g/lbs)	Compatible Camera
SC-X-H2/H2S	Aluminum	151.3*118.6*59.8/6.0*4.7*2.4	145/0.32	210±5/0.46±0.01	FUJIFILM X-H2, FUJIFILM X-H2S
SCH-X-H2/H2S	Aluminum	183.6*151.3*140.0/7.2*6.0*5.5	145/0.32	370±5/0.82±0.01	FUJIFILM X-H2, FUJIFILM X-H2S



# Accessories Series



# HA-77

## Retractable Arm

- Retractable Function: extend from 50cm/19.7 inches to 77cm/30.3 inches flexibly.
- 360 degrees rotation and +/- 90° tilting.
- 30.5cm/12 inches horizontal movement.
- Soft foam handle can be attached to any side of the Arm.



HA-77

Model	Material	Scale	Rotation	Tilt	Length (mm/inches)
HA-77	Aluminum	Yes	360°	+90°/-90°	500-770/19.7-30.3
Base Height (mm/inches)	Folded Length (mm/inches)	Weight (kg/lbs)	Max. Load (kg/lbs)		
200/7.9	370/14.6	1.2/2.6	5/11.0		

# LE-60

## Leveling Base

- The lockable 60mm/2.36 inches half-ball can tilt 0° to 15° in any direction.
- Bubble level for fast leveling adjustment.
- Three locking screws prevent tripod head from moving.
- The base can be attached to tripod with the 3/8" screw and the platform can be attached to head with the 1/4" screw.
- Include the 1/4" and 3/8" convertible screw.



LE-60

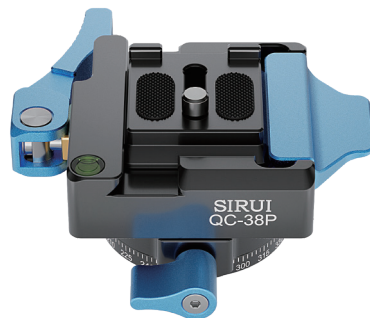
Head	Material	Colour	Tilt	Base Dia. (mm/inches)	
LE-60	Aluminum	Black	15°	60/2.4	
Ball Dia. (mm/inches)	Height (mm/inches)	Weight (kg/lbs)	Max. Load (kg/lbs)		
60/2.4	44/1.7	0.29/0.64	30/66.1		

# Quick Release Clamp Series

- Quick insert and detach.
- Panoramic shooting (QC-38P).
- Side loading from four directions and lock tightly.



QC-38

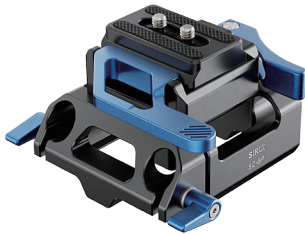


QC-38P

Model	Material	Locking	Quick Release Plate	Panorama Base	Dimensions (mm/ inches)	Weight (g/lbs)	Max. Load (kg/lbs)
QC-38	Aluminum Alloy	Flip	Arca-swiss	/	86X76X25/ 3.39X2.99X0.98	160/0.35	15/33.06
QC-38P	Aluminum Alloy	Flip	Arca-swiss	360° Panorama Base	86X91X42/ 3.39X3.58X1.65	250/0.55	15/33.06

# Compatible Baseplate Series

- Modular design - detach the clamp from the baseplate and use separately.
- Side loading quick release plate.
- Compatible with ARRI dovetail plate.
- 15mm carbon fiber dual rods, lens support (SC-BPS).



SC-BP



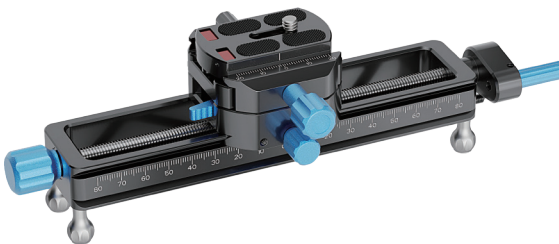
SC-BPS

Model	Material	Dimensions (mm/inches)	Height Range of Lens Support (mm/inches)	Weight (g/lbs)	Max.Load (kg/lbs)	Compatible Camera
SC-BP	Aluminum Alloy 6061	109.0 x 90.0 x 64.5 / 4.29 x 3.54 x 2.54	/	465/1.02	15/33.06	Universal
SC-BPS	Aluminum Alloy 6061	300.0 x 109.0 x 87.0 / 11.81 x 4.29 x 3.43	55/2.17	650/1.43	15/33.06	Universal

## MS18

### Macro Focusing Rail

- This 180mm rail has a travel range of 170mm/6.69inches.
- Large Adjustment and Minor Adjustment (1.25mm of movement per revolution).
- 360° rotating head - four angles are available: 0°, 90°, 270°, 360°.
- Detachable feet.



MS18

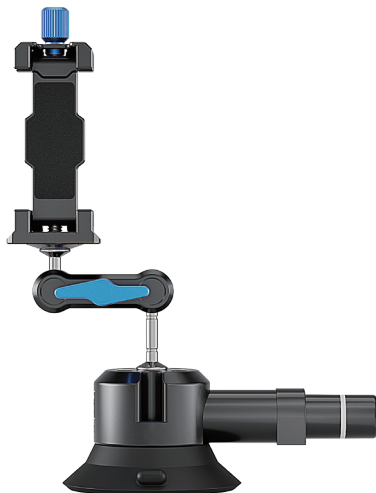


Model	Material	Dimensions (mm/inches)	Length (mm/inches)	Max Load (kg/lbs)	Weight (g/lbs)	Compatible Camera
MS18	Aluminum Alloy 6061	220*73*71 / 8.66*2.87*2.80	180/7.09	10/22.05	440±5/0.97±0.01	Universal

# Alien Series

## MA-SC Suction Cup Mounting Kit

- Compact and portable.
- Strong suction force.
- 360° flexible adjustment with two ball heads.
- Smartphone clamp included.
- 1/4" -20 Threaded Holes for various accessories.



MA-SC

Model	Compatibility	Color	Material	Dimensions (mm/inches)	Weight (g/lbs)	Suction Force (kg/lbs)	Max Load (kg/lbs)	Clamping Range-Smartphone (mm/inches)
MA-SC	Universal	Black	Aluminum Alloy 6061 +Plastic+Silicone	129.9*92.5*90.4 /5.1*3.6*3.6	300±5/0.7 ±0.01	Horizontal Bearing Load: 20/44.1 Vertical Bearing Load: 12/26.5	1.0/2.2	58-94/2.3-3.7

## Crab Clamp with Magic Arm

- Clamping ranges from 15mm/0.6in to 45mm/1.8in, and the maximum open jaw is 50mm/1.97in.
- Integrated design.
- Built-in rubber pad on the clamp jaws ensures the clamp will not damage your tripod or c-stand.
- Two ball heads is designed for flexible angle adjustments.
- Smartphone clamp Included.
- 1/4" and 3/8" Threaded Holes for various accessories.



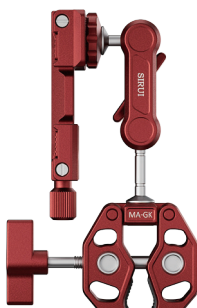
MA-GK



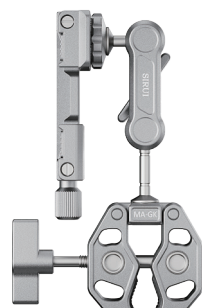
MA-GK



MA-G



MA-GR



MA-GS

Model	Compatibility	Color	Material	Dimensions (mm/inches)	Weight (g/lbs)	Max Load (kg/lbs)	Clamping Range-Smartphone (mm/inches)	Clamping Range-Crab Clamp(mm/inches)
MA-GK/MA-G/ MA-GR/MA-GS	Universal	Black/Green /Red/Silver	Aluminum Alloy 6061	103.4*92.6*37.5 /4.1*3.6*1.5	235±5 /0.5±0.01	1.5/3.3	58-94/2.3-3.7	15mm-45mm/0.6in-1.8in; Max open jaw 50mm/1.97in

# Telescope Accessories Series



BA-1  
Binocular Tripod Adapter



BA-WM  
Window Mount with 2-Way Head

## BA-1 and BA-WN can be used together

- Portable Two-Way Head:
  - 360° panorama base,  $\pm 90^\circ$  tilt range.
  - The removable handle can be mounted from 4 different positions for easy operation.
- The clamp is lined with three rubber padding for a secure grip and protect the surface from scratching.



BA-1 with BA-WN

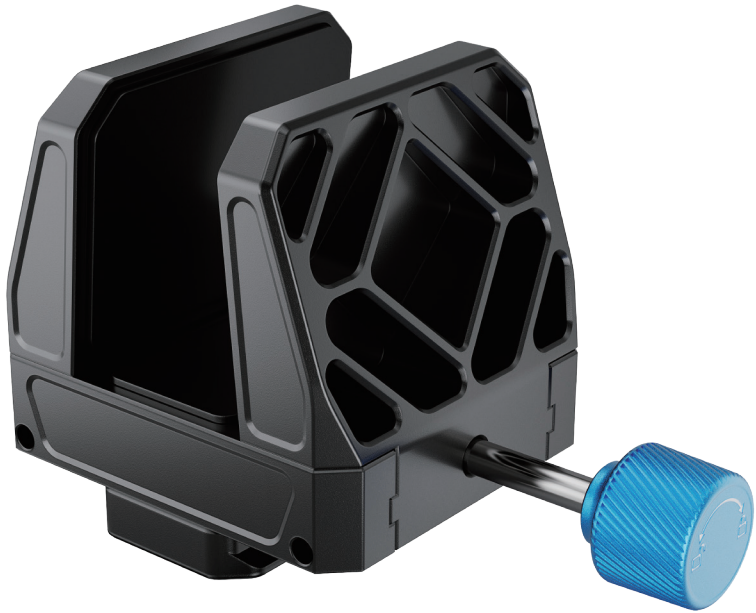


Model	Material	Dimensions (mm/inches)	Weight (g/lbs)	Max Load (kg/lbs)	Base	Threaded Stud
BA-1	Aluminum	64*38*82/2.52*1.50*3.23	0.07/0.15	5/11.02	Arca-type Base	1/4" Screw

Model	Material	Pan	Tilt	Base Dia (mm/inches)	Length (mm/inches)	Width (mm/inches)	Height (mm/inches)	Weight (kg/lbs)	Max Load (kg/lbs)
BA-WM	Aluminum	360°	$\pm 90^\circ$	43/1.69	95/3.74	55/2.17 (handle included: 155/6.10)	124/4.88	0.45/0.99 (handle and QR plate included)	5/11.02

# GC-1 Rifle Clamp

- Clamping range from 28mm to 80mm.
- The knob is made large and roughly textured to ensure easy operation.
- Compatible with most firearms on the market.



GC-1



Model	Material	Dimensions(mm/inches)	Weight(g/lbs)	Clamp Range(mm/inches)
GC-1	Aluminum Alloy 6061	136.0x85.0x75.0/0.45x0.28x0.25	440±5/0.97±0.01	28-80/0.09-0.26



Humidity Control Cabinet

# HC Series

## Electronic Humidity Control Cabinets



**Anti-Bacterial Coating:** Internal Photocatalyst TiO2 Coating provides effective anti-bacterial function and other functions of deodorization, purification and mildew proof.

\*HC40X with no photocatalyst.



**Electronic Humidity Control:** The cabinets have automatic electronic dehumidification function and include high performance built-in dehumidification mechanism with features of digital control, high efficiency, energy-saving and pollution-free for long-term storage and dehumidification of your photo and video gear.



**Tempered Glass Door With Lock:** It is made of high-quality tempered glass with excellent water-proof, dust-proof and air tightness properties to check internal objects. The handle lock secures your equipments.



**Build Quality:** The body is made of cold plates through integral bending and argon arc welding.



**LCD Digital Display:** The digital button panel is easy to use and features LCD digit play to show temperature and humidity readings.



HC40X



HC50S



HC70



HC110



HC200

- Large capacity with double cabinets and locking doors.
- Maintain low humidity within the cabinet for 24 Hours even power shuts off.

Model	Height (mm/inches)	Width (mm/inches)	Depth (mm/inches)	Weight (kg/lbs)	Capacity (L)
HC40X	450/17.7	320/12.6	320/12.6	7.3/16.1	40
HC50S	520/20.5	400/15.7	335/13.2	9.5/20.9	50
HC70	680/26.8	400/15.7	335/13.2	16.2/35.7	70
HC110	820/32.3	450/17.7	380/15.0	23.5/51.8	110
HC200	1250/49.2	450/17.7	420/16.5	36.5/80.5	200

\*HC40X: Photo-free catalysis.

\*The above are external specs.



# IHS Series

## Electronic Humidity Control and Safety Cabinets



**Biometric Fingerprint Identification System:** Safe and secure as fingerprints are unique. 128 fingerprints can be recorded by the fingerprint scanner.



**Electronic Keyboard:** Enter the password of 6 to 12 characters with the new electronic keyboard while the keyboard light turns on and the password memory function will record even with a power failure.



**Remote Control:** Remotely operate and monitor the cabinet via SIRUI Cabinets APP or SIRUI Official Wechat Public Account.



**Electronic Humidity Control:** The cabinets have automatic electronic dehumidification function and include high performance built-in dehumidification mechanism with features of digital control, high efficiency, energy-saving and pollution-free for long-term storage and dehumidification of your photo and video gear.



**Anti-Bacterial Coating:** Internal Photocatalyst TiO<sub>2</sub> Coating provides effective anti-bacterial function and other functions of deodorization, purification and mildew proof.



**Cabinet:** the cabinets are made of 6mm/0.25inches high-strength and cold-rolled steel in high-frequency argon arc precision welding for long use.



IHS260X



IHS110X



IHS70X

- The China Compulsory Product Certification (3C certification), the certification number is 2014031904000284.
- Internal humidity control component to prevent from exposure and damage.
- Maintain low humidity within the cabinet for 24 Hours even power shuts off.
- Loud Alarm Warning Signal (>90dB).

Model	Height (mm/inches)	Width (mm/inches)	Depth (mm/inches)	Weight (kg/lbs)	Capacity (L)
IHS70X	700/27.6	415/16.3	360/14.2	52/114.6	70
IHS110X	856/33.7	450/17.7	380/15	70/154.3	110
IHS260X	1340/52.8	520/20.5	450/17.7	120/264.6	260

\*The above are external specs.



SIRUI, Capturing Your Imagination!

**More New Products Coming Soon.**

Follow @SIRUIImaging



Instagram



Facebook



Youtube

[www.sirui.com](http://www.sirui.com)

Guangdong SIRUI Optical Co.,Ltd.

The catalog is compiled as comprehensive and detailed as possible based on the existing information. But color, standard configuration and specifications are subject to change without notice.