

NEC MultiSync® Photo Edition



Bundle LCD Monitor with calibration sensor and software:

MultiSync® Monitor

Colorimeter Eye-One Display 2

SpectraView® Profiler PE Software

- Software for calibrating and profiling all display types (CRT, LCD, Laptop)
- Fully automatic combined hard- and software calibration for supported displays with summary of results for reference
- Easy to use with predefined calibration and profile settings (office, pre-press, photography, laptop, video, web, and ISO 3664/ISO 12646)
- Visually linear L*, gamma and true sRGB calibration curves for video and web design
- Linear calibration including ambient light consideration: CIECAM02 - dim
- Colour temperature adjustment through the On Screen Display (OSD) using measured values
- ICC Version 2 or Version 4, 16-bit Look-up Tables (LUT) or matrix profiles
- ICC monitor profile is saved to hard disk, displaying the storage path after successful calibration and profiling
- Automatic activation of the created ICC monitor profile as the default system profile
- Calibrates and profiles multiple monitors
- ICC monitor profiles can be created using differing calibration parameters (D50, D65, L* or Gamma using user preferred luminance values) and automatically adjusts the monitor hardware based on the calibration settings
- Supports all popular colorimeters and spectrophotometers including basICColor SQUID, basICColor SQUID 2, Spyder 2, Eye-One display, Eye-One display 2, Eye-One display LT, OPTIX XR, DTP 94 USB, Eye-One Pro, Eye-One Monitor



NEC MultiSync® Photo Edition

MultiSync® 90er-Series

	LCD1990SXi	LCD2090UXi	LCD2190UXp
Screen Size [inch/cm] / Aspect Ratio	19.0 / 48.2 / 5:4	20.1 / 51.0 / 4:3	21.3 / 54.0 / 4:3
Optimum Resolution	1280 x 1024 at 60 Hz	1600 x 1200 at 60 Hz	1600 x 1200 at 60 Hz
Panel Technology / Response Time (typ.) [ms]	S-IPS / 9	S-IPS A-TW Pol. / 8	S-PVA / 8
Pixel Pitch [mm] / Viewing Angle (h/v)	0.294 / 178°/178°	0.255 / 178°/178°	0.270 / 178°/178°
Brightness [cd/m²] / Contrast Ratio (typ.)	270 / 600:1	280 / 700:1	300 / 1000:1
Horiz. Frequency [kHz] / Vertical Frequency [Hz]	31.5 - 81.1 / 50 - 85	31.5 - 91.1 / 50 - 85	31.5 - 91.1 / 50 - 85
Number of Inputs	1 x VGA, 1 x DVI-I, 1 x DVI-D	1 x VGA, 1 x DVI-I, 1 x DVI-D	1 x VGA, 1 x DVI-I, 1 x DVI-D
ambix ³ ™ Technology	yes	yes	yes
ColorComp Technology	yes	yes	yes
Height adjustable [mm]	150 /yes	150 /yes	150 /yes
VESA Mounting [mm]	100 x 100	100 x 100	100 x 100
Audio Functions	Option (2 + 2 W)	Option (2 + 2 W)	Option (2 + 2 W)
Ergonomics	TCO'03	TCO'03	TCO'03
Dimensions W x H x D [mm] incl. stand	402.3 x 410.7 - 560.7 x 247.3	439.2 x 415.5 - 565.5 x 247.3	464.8 x 424.8 - 574.8 x 247.3
Weight [kg] incl. stand	9.0	9.7	10.7
Power Requirements on Mode [W]/Power Save [W]	46 / 1	50 / 1	60 / 1
Bezel Width [mm]	12	14.6	15.7
Colour Versions (Front/Back)	● ●	● ●	● ●

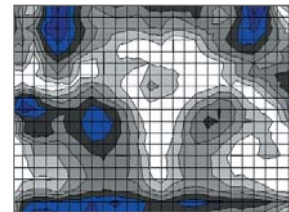
Calibration sensor



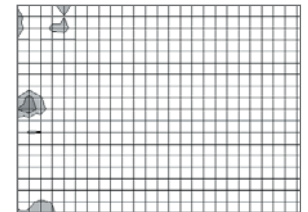
Calibration software



ColorComp: Innovative feature to compensate the typical LCD non-homogeneity of colour, brightness and Gamma.



without ColorComp



with ColorComp

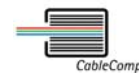
Preset Name

Colourtemperature

Tonal response curve

Brightness settings

Office	D65	Gamma 2.2	Max / Min
PrePress - gamma based	D50	Gamma 1.8	130 / Min
PrePress - standard	D50	L*	130 / Min
Photography - gamma based	D50	Gamma 1.8	Max / Min
Photography - standard	D50	L*	Max / Min
Photography - standard cool white	D65	L*	Max / Min
Photography - web based	D65	sRGB	Max / Min
ISO 3664 and ISO 12646	D50	L*	160 / Min
ISO 3664 and ISO 12646 - repro	D50	CIECAM02 - dimmed	160 / Min
Notebook	Nativ	L*	Max / Contrast Max
Video	D50	sRGB	Max / Min
WebDesign	D65	sRGB	140 / Min



All hardware and software names are brand names and/or registered trademarks of the respective manufacturers. All rights reserved. All specifications are subject to change without notice. April 2007

see more.

NEC Display Solutions

www.nec-display-solutions.com
NEC Display Solutions Europe GmbH