



FlexScan Widescreen Monitors

Broaden your business horizons



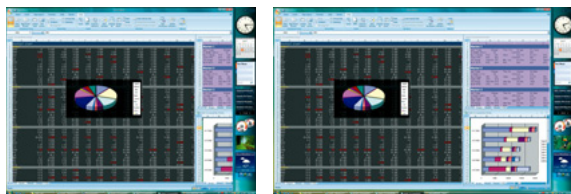
*To bring widescreen benefits to trading floors and back offices, EIZO introduces a new series of FlexScan monitors. Available in 24.1", 22" and 20.1" sizes with a choice of VA or TN technology, this series of six models meets a broad range of performance needs. And combining built-in features that reduce energy use and eye strain with a design that allows more open, better-fitting configurations, they will be welcomed by traders and business users alike.*



## F E A T U R E S

### Widescreen Format

The wide format design (16:10 aspect ratio) offers increased horizontal space compared to conventional monitors so you can keep tool palettes open without covering the window you're working or simultaneously work in multiple windows.



4:3 aspect ratio

16:10 aspect ratio

### Full Color Display & Detailed Color Control

All models come with 8-bit display for each RGB and 10-bit gamma correction. This produces 16.7 million displayable colors from a palette of over one billion for detailed rendering of similar shades of color. Color control options in the OSD menu include brightness, contrast, gamma, hue, saturation, gain, and color temperature from 4,000 K to 10,000 K in 500 K increments.

The S2231W has a wide color gamut that reproduces 92% vs. the NTSC standard, which allows it to display a wider range of colors than conventional monitors and cover most of the CMYK spaces used in printing.

### Fine Contrast Mode Selection

For optimum viewing of different kinds of content, EIZO's Fine Contrast function includes modes for office applications (Text mode), video clips (Movie mode), graphics (Picture mode), web browsing (sRGB mode), and user-defined settings (Custom mode). Switching between modes is done by pressing a button on the front panel or by using the bundled ScreenManager Pro for LCD software, which supports automatic mode switching such as changing to Text mode when an e-mail application is selected.

### High Contrast Ratios

Contrast ratios are a maximum of 1000:1 for most models. This outstanding performance makes it easier to distinguish between similarly-colored figures in large spreads of data, and so helps reduce reading errors.

### Placement Flexibility

Position the screen wherever you like with height adjustment, tilt, and swivel. The monitors also pivot for more comfortable viewing of web pages or long



## Model Summary

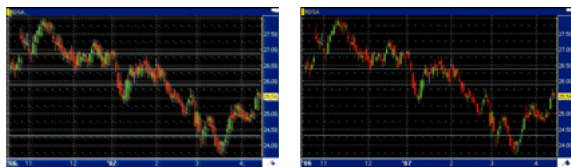
Model	S2431W	S2401W	S2231W	S2201W	S2031W	S2001W
Panel Size & Type	24.1"W VA	24.1"W TN	22"W VA	22"W TN	20.1"W VA	20.1"W TN
Native Resolution	1920 × 1200	1920 × 1200	1680 × 1050	1680 × 1050	1680 × 1050	1680 × 1050
Displayable Colors	16.77 million	16.77 million	16.77 million (92% vs. NTSC)	16.77 million	16.77 million	16.77 million
Brightness	450 cd/m <sup>2</sup>	360 cd/m <sup>2</sup>	250 cd/m <sup>2</sup>	300 cd/m <sup>2</sup>	300 cd/m <sup>2</sup>	300 cd/m <sup>2</sup>
Viewing Angle	178°/178°	170°/160°	178°/178°	170°/160°	178°/178°	170°/170°
Contrast Ratio	1000:1	1000:1	1000:1	1000:1	900:1	1000:1
Response Time (On/Off)	16 ms	5 ms	16 ms	5 ms	16 ms	5 ms
Midtone Response Time	6 ms	–	8 ms	–	8 ms	–
BrightRegulator	•	•	•	•	•	•
Backlight Sensor	•	•	•	–	–	–

Specifications for the S2231W are preliminary and subject to change without notice.

text documents. Compatibility with VESA mounting standards allows the monitors to be removed from the stand and mounted on a movable arm or wall bracket.

### Built for Moving Image Playback

The inclusion of an overdrive circuit with three models (S2431W, S2231W, S2031W) provides smooth playback of moving images such as streaming video.



Without overdrive circuit

With overdrive circuit

### Digital and Analog Signal Support

DVI-I (digital or analog) and D-Sub (analog) inputs offer connection with one or two PCs. Switching among the inputs can be done with a front panel button.

### USB 2.0 Hub

A high speed (480 Mb/s) USB 2.0 hub includes on upstream and two downstream ports for connection of peripherals directly to the monitor.

### HDCP Support

Support for high-bandwidth digital content protection (HDCP) through the DVI-I input allows for viewing of content from HDCP-equipped devices.

### Accessories

Accessories available include an attachable sound unit, mounting arms, and panel protectors with both glossy and non-glare sides. For detailed information, please see [www.eizo.com/products/accessories](http://www.eizo.com/products/accessories).

### Certifications and Standards

The S2431W and S2031W carry the Windows Vista Premium logo and are TCO'03 and TÜV Rheinland certified. They also carry the EIZO Eco Products 2006 logo indicating they meet a strict set of internal requirements for design, manufacturing, packaging, and usage. (Other models are currently under application.)



## A Full Range of Monitors

With six monitors in three sizes and two panel technologies, this lineup offers a range of performance that can meet the many individual needs of an organization. Both VA and TN panels are available in each size — VA technology offers the image quality and wider viewing angles required for the trading floor, while TN technology is suitable for back office applications. And because all models share the same sleek design as the latest EIZO 17" and 19" models, your operation looks consistent and professional throughout.

## Energy Savings

For operations that use a large number of monitors, any reduction in power consumption per screen can significantly lower costs. The BrightRegulator function plays an important part in this by reading the ambient light of the office environment and adjusting the brightness of the backlight accordingly. As a result, energy is saved because the screen is never too bright. While the typical user can turn up the monitor to compensate for bright light then forget to turn it down later if ambient light is dimmed, BrightRegulator optimizes brightness automatically throughout the day so there is nothing to forget. These monitors also reduce energy costs with a convenient off timer. By switching the monitor to power-off status at a user-specified time, energy can be saved even if monitors are left on at the end of the day.

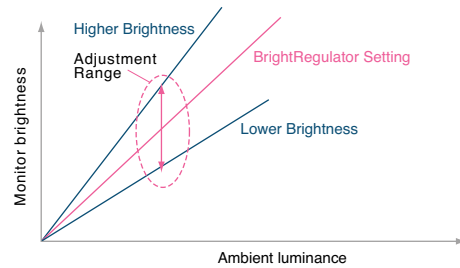
## Optimized Brightness

In many offices, especially those with larger windows, levels of light are constantly changing. Reflective surfaces, such as papers, walls, and tabletops reflect the differing levels of light at different times of the day and in different weather. Meanwhile, the level of monitor brightness stays the same, which means the pupil of the eye has to adjust every time you look away from, or back at the screen. This leads to eye fatigue, which compromises performance.

EIZO overcomes this problem with BrightRegulator, which detects changes in ambient luminance and adjusts the brightness of the monitor accordingly. When the room is bright, screen brightness is increased to make for easy reading. And when lighting levels drop, screen brightness decreases. In this way the eyes are protected from excess brightness throughout the day or night. Because the function is entirely automatic, the benefits are magnified when multiple

EIZO monitors are used together because there's no need to manually adjust brightness for each screen. Should the user want to make the screen a little brighter or a little darker, the manual adjustment in the OSD menu is still an option and BrightRegulator will remember the setting.

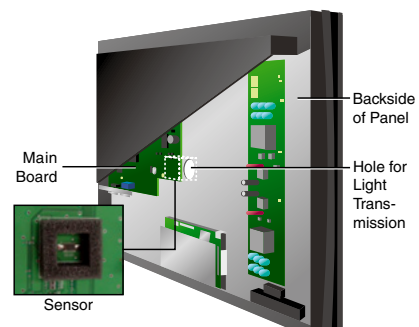
### Brightness Adjustment with BrightRegulator



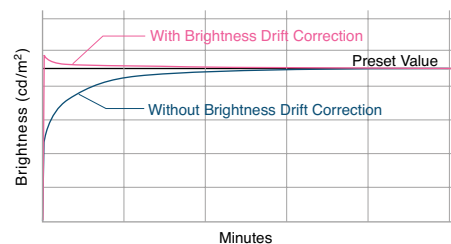
*The monitor's optimum brightness as determined by BrightRegulator can be further adjusted manually if a lighter or darker screen is preferred*

Eye fatigue can also result from the fluctuations in backlight brightness that normally occur from screen startup and can last for up to two hours. Changes in temperature can cause backlight levels to change, as can the inevitable deterioration of the monitor's fluorescent light over time. In addition, a backlight can suffer deterioration from power surges. An EIZO patented backlight sensor detects and counteracts these influences so brightness stays stable and product life is extended. (Backlight sensor included with the S2431W, S2401W, and S2231W only.)

These features ensure the user will have the same perceived image regardless of actual changes in ambient lighting and the backlight's stability.



### Brightness Stabilization with Backlight Sensor



## Unobtrusive Speakers



Because 0.5 watt speakers are hidden at the bottom of all models, users enjoy sound while bezel size is kept to a minimum. For those

requiring greater volume, the separate i-Sound L3 sound unit with dual 0.9 watt speakers can be attached to the bottom of the screen to focus sound directly at the user.



*i-Sound L3 sound unit*

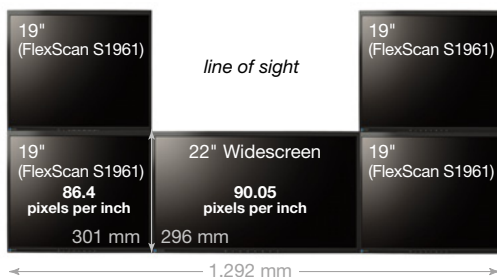
## Configurations Conducive To Trade

These monitors let companies make the best use of widescreen-optimized Windows Vista features, such as the Sidebar function and Media Center. When grouped with other EIZO monitors, they allow more open and better-fitting multi-panel configurations, such as in the diagrams below, where the central widescreen monitors provide greater overall screen space with minimal bezel. By combining a 24.1" widescreen monitor with 21" monitors, or a 22" widescreen monitor with 19" monitors, the configurations are a perfect fit to the standard 1,500 mm trading desk or the common 1,300 mm desk. One advantage of this kind of configuration is the open line of sight that allows traders to communicate face to face and not feel 'fenced in' like they can with conventional two-row

21" and 24.1" Widescreen Trading Configuration



19" and 22" Widescreen Trading Configuration



configurations. It also contributes to work safety as traders will have better visibility of what is happening in front of them. Because they have the same or similar number of pixels per inch as other EIZO monitors, eye strain is not a concern when glancing from screen to screen.

## 5-Year Manufacturer Warranty

While many other manufacturers outsource production to an overseas third party, EIZO uses only its own factories and staff. As a result, EIZO keeps closer control over production quality, which translates into higher reliability, and allows EIZO to offer its exclusive 5-year guarantee.



That's why EIZO monitors are an investment that pays off over time — doing away with worries of frequent product replacement and resultant downtime.

## Commitment to Quality

EIZO seals its commitment to quality with the opening of its new R&D center at its corporate headquarters in Hakusan, Japan. Built adjacent to the factory and quality control department, this new addition means all essential EIZO business functions, from product planning to packaging, are now centralized in one location. Bringing 600 personnel together on 13,000 square meters of floor space, it will allow EIZO to achieve further efficiency and increase its competitive edge.



*EIZO's new R&D center at its corporate headquarters in Hakusan, Japan*

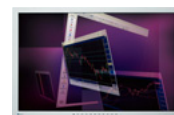
# SPECIFICATIONS



FlexScan S2431W



FlexScan S2401W



FlexScan S2231W\*

<b>Panel</b>	Size and Type	61 cm (24.1") TFT color LCD panel		61 cm (24.1") TFT color LCD panel		56 cm (22") TFT color LCD panel	
	Viewing Angles (H, V)	178°, 178° (at contrast ratio of 10:1)		170°, 160° (at contrast ratio of 10:1)		178°, 178° (at contrast ratio of 10:1)	
	Brightness / Contrast	450 cd/m <sup>2</sup> / 1000:1		360 cd/m <sup>2</sup> / 1000:1		250 cd/m <sup>2</sup> / 1000:1	
	On/Off Response Time	16 ms		5 ms		16 ms	
	Midtone Response Time <sup>1</sup>	6 ms		-		8 ms	
	Native Resolution	1920 × 1200		1920 × 1200		1680 × 1050	
	Active Display Size (H × V)	518.4 × 324 mm		518.4 × 324 mm		473.8 × 296.1 mm	
	Viewable Image Size	Diagonal: 611 mm		Diagonal: 611 mm		Diagonal: 558 mm	
	Pixel Pitch	0.270 × 0.270 mm		0.270 × 0.270 mm		0.282 × 0.282 mm	
	Display Colors	16.77 million from a palette of 1.06 billion		16.77 million from a palette of 1.06 billion		16.77 million from a palette of 1.06 billion	
<b>Available Cabinet Colors</b>		Gray, Black		Gray, Black		Gray, Black	
<b>Dot Clock</b>		Analog: 202.5 MHz, Digital: 162 MHz		Analog: 202.5 MHz, Digital: 162 MHz		Analog: 150 MHz, Digital: 120 MHz	
<b>Scanning Frequency (H, V)</b>	Analog	24 – 94 kHz, 49 – 86 Hz		24 – 94 kHz, 49 – 86 Hz		24 – 82 kHz, 49 – 86 Hz	
	Digital	31 – 76 kHz, 59 – 61 Hz (VGA Text: 69 – 71 Hz)		31 – 76 kHz, 59 – 61 Hz (VGA Text: 69 – 71 Hz)		31 – 65 kHz, 59 – 61 Hz (VGA Text: 69 – 71 Hz)	
<b>Input Signals</b>		Analog: RGB Analog, Digital: DVI Standard 1.0		Analog: RGB Analog, Digital: DVI Standard 1.0		Analog: RGB Analog, Digital: DVI Standard 1.0	
<b>Input Terminals</b>		D-Sub mini 15 pin, DVI-I 29 pin (switchable), HDCP supported <sup>2</sup>		D-Sub mini 15 pin, DVI-I 29 pin (switchable), HDCP supported <sup>2</sup>		D-Sub mini 15 pin, DVI-I 29 pin (switchable), HDCP supported <sup>2</sup>	
<b>USB Ports / Standard</b>		1 upstream, 2 downstream / USB Standard Rev. 2.0		1 upstream, 2 downstream / USB Standard Rev. 2.0		1 upstream, 2 downstream / USB Standard Rev. 2.0	
<b>Plug &amp; Play</b>		VESA DDC/CI, DDC 2B		VESA DDC/CI, DDC 2B		VESA DDC/CI, DDC 2B	
<b>Power</b>	Power Requirements	AC 100 – 120 V, 200 – 240 V: 50 / 60 Hz		AC 100 – 120 V, 200 – 240 V: 50 / 60 Hz		AC 100 – 120 V, 200 – 240 V: 50 / 60 Hz	
	Power Consumption	110 W maximum 34 W typical		110 W maximum 34 W typical		75 W maximum 38 W typical	
	Power Save Mode	Less than 2 W		Less than 2 W		Less than 2 W	
<b>Physical Specifications</b>	Height Adjustment Range	82 mm		82 mm		82 mm	
	Tilt / Swivel / Pivot	40° Up, 0° Down / 35° Right, 35° Left / 90°		40° Up, 0° Down / 35° Right, 35° Left / 90°		40° Up, 0° Down / 35° Right, 35° Left / 90°	
	Dimensions (W × H × D)	With Stand: 566 × 456 – 538 × 208.5 mm, Without Stand: 566 × 367 × 85 mm		With Stand: 566 × 456 – 538 × 208.5 mm, Without Stand: 566 × 367 × 85 mm		With Stand: 507 × 439 – 521 × 230 mm, Without Stand: 507 × 333 × 74 mm	
	Net Weight	With Stand: 10.6 kg, Without Stand: 7.6 kg		With Stand: 10.6 kg, Without Stand: 7.6 kg		With Stand: 11.2 kg, Without Stand: 7.7 kg	
<b>Auto Brightness Functions</b>		Auto Brightness Stabilization, BrightRegulator		Auto Brightness Stabilization, BrightRegulator		Auto Brightness Stabilization, BrightRegulator	
<b>Auto Adjustment Functions (Analog)</b>		Auto Setup		Auto Setup		Auto Setup	
<b>Display Mode Options</b>		Fine Contrast (Text, Picture, Movie, sRGB, Custom, WindowMovie <sup>3</sup> ), Auto Fine Contrast <sup>4</sup>		Fine Contrast (Text, Picture, Movie, sRGB, Custom, WindowMovie <sup>3</sup> ), Auto Fine Contrast <sup>4</sup>		Fine Contrast (Text, Picture, Movie, sRGB, Custom, WindowMovie <sup>3</sup> ), Auto Fine Contrast <sup>4</sup>	
<b>Screen-Manager OSD Adjustment Functions</b>	Screen Adjustment (Analog)	Clock, Phase, Position, Range Adjustment (Auto), Signal Filter, Screen Size (full screen, enlarge, normal), Smoothing (5 stages), Border Intensity		Clock, Phase, Position, Range Adjustment (Auto), Signal Filter, Screen Size (full screen, enlarge, normal), Smoothing (5 stages), Border Intensity		Clock, Phase, Position, Range Adjustment (Auto), Signal Filter, Screen Size (full screen, enlarge, normal), Smoothing (5 stages), Border Intensity	
	Color Adjustment	Brightness, Contrast, Gamma, Temperature (in 500 K increments from 4,000 K – 10,000 K including 9,300 K), Saturation, Hue, Gain, Reset		Brightness, Contrast, Gamma, Temperature (in 500 K increments from 4,000 K – 10,000 K including 9,300 K), Saturation, Hue, Gain, Reset		Brightness, Contrast, Gamma, Temperature (in 500 K increments from 4,000 K – 10,000 K including 9,300 K), Saturation, Hue, Gain, Reset	
		Power Save Settings	Analog	PowerManager (VESA DPMS)	PowerManager (VESA DPMS)	PowerManager (VESA DPMS)	PowerManager (VESA DPMS)
	Digital	PowerManager (DVI DMPM)	PowerManager (DVI DMPM)	PowerManager (DVI DMPM)	PowerManager (DVI DMPM)	PowerManager (DVI DMPM)	
Other Settings		Signal Switching, Product Information (product name, serial number, resolution, operating time), OSD Menu Settings, Adjustment Lock, DDC/CI Lock, Languages (English, French, German, Italian, Japanese, Simplified Chinese, Spanish, Swedish, Traditional Chinese), Beep, BrightRegulator, Off Timer, Reset		Signal Switching, Product Information (product name, serial number, resolution, operating time), OSD Menu Settings, Adjustment Lock, DDC/CI Lock, Languages (English, French, German, Italian, Japanese, Simplified Chinese, Spanish, Swedish, Traditional Chinese), Beep, BrightRegulator, Off Timer, Reset		Signal Switching, Product Information (product name, serial number, resolution, operating time), OSD Menu Settings, Adjustment Lock, DDC/CI Lock, Languages (English, French, German, Italian, Japanese, Simplified Chinese, Spanish, Swedish, Traditional Chinese), Beep, BrightRegulator, Off Timer, Reset	
<b>Audio</b>		Dual 0.5 W built-in speakers, input / headphone jacks		Dual 0.5 W built-in speakers, input / headphone jacks		Dual 0.5 W built-in speakers, input / headphone jacks	
<b>Certifications and Standards</b>		TCO'03, TÜV/Ergonomics (including ISO 13406-2), TÜV/GS, c-Tick, CE, CB, UL (cTÜVus), CSA (cTÜVus), FCC-B, Canadian ICES-003-B, TÜV/S, VCCI-B, EPA ENERGY STAR®, RoHS, WEEE, EIZO Eco Products 2006		TCO'03, TÜV/Ergonomics (including ISO 13406-2), TÜV/GS, c-Tick, CE, CB, UL (cTÜVus), CSA (cTÜVus), FCC-B, Canadian ICES-003-B, TÜV/S, VCCI-B, EPA ENERGY STAR®, RoHS, WEEE, EIZO Eco Products 2006		TCO'03, TÜV/Ergonomics (including ISO 13406-2), TÜV/GS, c-Tick, CE, CB, UL (cTÜVus), CSA (cTÜVus), FCC-B, Canadian ICES-003-B, TÜV/S, VCCI-B, EPA ENERGY STAR®, RoHS, WEEE, EIZO Eco Products 2006	
<b>Supplied Accessories</b>		AC power cord, signal cables (DVI-D – DVI-D, D-Sub – D-Sub), USB cable, audio cable, EIZO LCD Utility Disk (PDF user's manual, ScreenManager Pro for LCD <sup>5</sup> , ICC Profile), setup guide, 4 screws for mount option, warranty registration card		AC power cord, signal cables (DVI-D – DVI-D, D-Sub – D-Sub), USB cable, audio cable, EIZO LCD Utility Disk (PDF user's manual, ScreenManager Pro for LCD <sup>5</sup> , ICC Profile), setup guide, 4 screws for mount option, warranty registration card		AC power cord, signal cables (DVI-D – DVI-D, D-Sub – D-Sub), USB cable, audio cable, EIZO LCD Utility Disk (PDF user's manual, ScreenManager Pro for LCD <sup>5</sup> , ICC Profile), setup guide, 4 screws for mount option, warranty registration card	
<b>Warranty</b>		Five Years <sup>6</sup>		Five Years <sup>6</sup>		Five Years <sup>6</sup>	

<sup>1</sup> Average response time measured between each grayscale level of 31, 63, 95, 127, 159, 191, and 223. <sup>2</sup> Display with audio/video devices is not supported. <sup>3</sup> WindowMovie mode is selectable only when Auto Fine Contrast is active. It is supported by Microsoft Windows XP/2000 only. <sup>4</sup> Bundled ScreenManager Pro for LCD is necessary to activate Auto Fine Contrast. Support for those functions varies with the graphics board used. <sup>5</sup> ScreenManager Pro for LCD is compatible with the Microsoft Windows Vista/XP/2000 operating systems only. <sup>6</sup> The usage time is limited to 30,000 hours or less, and the warranty period of the LCD panel and backlight is limited to three years from the date of purchase. \* Specifications for the S2231W including the certifications and standards are preliminary and subject to change without notice.



FlexScan S2201W

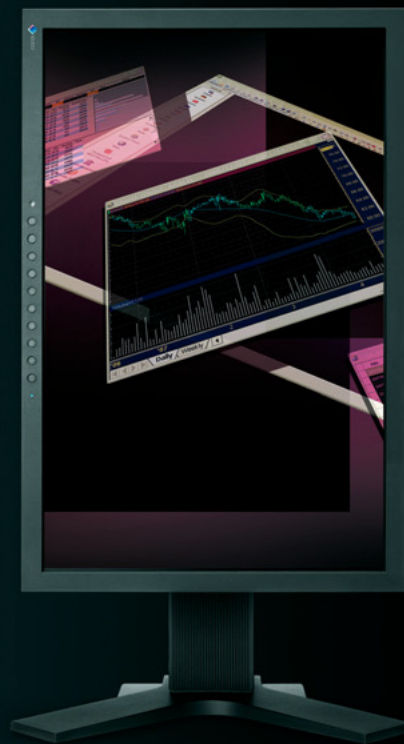


FlexScan S2031W



FlexScan S2001W

56 cm (22") TFT color LCD panel	51 cm (20.1") TFT color LCD panel	51 cm (20.1") TFT color LCD panel
170°, 160° (at contrast ratio of 10:1)	178°, 178° (at contrast ratio of 10:1)	170°, 170° (at contrast ratio of 10:1)
300 cd/m <sup>2</sup> / 1000:1	300 cd/m <sup>2</sup> / 900:1	300 cd/m <sup>2</sup> / 1000:1
5 ms	16 ms	5 ms
–	8 ms	–
1680 × 1050	1680 × 1050	1680 × 1050
473.8 x 296.1 mm	433.4 x 270.9 mm	433.4 x 270.9 mm
Diagonal: 558 mm	Diagonal: 511 mm	Diagonal: 511 mm
0.282 × 0.282 mm	0.258 × 0.258 mm	0.258 × 0.258 mm
16.77 million from a palette of 1.06 billion	16.77 million from a palette of 1.06 billion	16.77 million from a palette of 1.06 billion
Gray, Black	Gray, Black	Gray, Black
Analog: 150 MHz, Digital: 120 MHz	Analog: 150 MHz, Digital: 120 MHz	Analog: 150 MHz, Digital: 120 MHz
24 – 82 kHz, 49 – 86 Hz	24 – 82 kHz, 49 – 86 Hz	24 – 82 kHz, 49 – 86 Hz
31 – 65 kHz, 59 – 61 Hz (VGA Text: 69 – 71 Hz)	31 – 65 kHz, 59 – 61 Hz (VGA Text: 69 – 71 Hz)	31 – 65 kHz, 59 – 61 Hz (VGA Text: 69 – 71 Hz)
Analog: RGB Analog, Digital: DVI Standard 1.0	Analog: RGB Analog, Digital: DVI Standard 1.0	Analog: RGB Analog, Digital: DVI Standard 1.0
D-Sub mini 15 pin, DVI-I 29 pin (switchable), HDCP supported <sup>2</sup>	D-Sub mini 15 pin, DVI-I 29 pin (switchable), HDCP supported <sup>2</sup>	D-Sub mini 15 pin, DVI-I 29 pin (switchable), HDCP supported <sup>2</sup>
1 upstream, 2 downstream / USB Standard Rev. 2.0	1 upstream, 2 downstream / USB Standard Rev. 2.0	1 upstream, 2 downstream / USB Standard Rev. 2.0
VESA DDC/CI, DDC 2B	VESA DDC/CI, DDC 2B	VESA DDC/CI, DDC 2B
AC 100 – 120 V, 200 – 240 V: 50 / 60 Hz	AC 100 – 120 V, 200 – 240 V: 50 / 60 Hz	AC 100 – 120 V, 200 – 240 V: 50 / 60 Hz
60 W maximum 32 W typical	70 W maximum 29 W typical	60 W maximum 24 W typical
Less than 1 W	Less than 2 W	Less than 1 W
82 mm	82 mm	82 mm
40° Up, 0° Down / 35° Right, 35° Left / 90°	40° Up, 0° Down / 35° Right, 35° Left / 90°	40° Up, 0° Down / 35° Right, 35° Left / 90°
With Stand: 507 × 439 – 521 × 230 mm, Without Stand: 507 × 333 × 74 mm	With Stand: 469 × 427 – 509 × 208.5 mm, Without Stand: 469 × 309 × 69.5 mm	With Stand: 469 × 427 – 509 × 208.5 mm, Without Stand: 469 × 309 × 69.5 mm
With Stand: 10.2 kg, Without Stand: 6.7 kg	With Stand: 9.6 kg, Without Stand: 6.6 kg	With Stand: 8.7 kg, Without Stand: 5.7 kg
BrightRegulator	BrightRegulator	BrightRegulator
Auto Setup	Auto Setup	Auto Setup
Fine Contrast (Text, Picture, Movie, sRGB, Custom, WindowMovie <sup>3</sup> ), Auto Fine Contrast <sup>4</sup>	Fine Contrast (Text, Picture, Movie, sRGB, Custom, WindowMovie <sup>3</sup> ), Auto Fine Contrast <sup>4</sup>	Fine Contrast (Text, Picture, Movie, sRGB, Custom, WindowMovie <sup>3</sup> ), Auto Fine Contrast <sup>4</sup>
Clock, Phase, Position, Range Adjustment (Auto), Signal Filter, Screen Size (full screen, enlarge, normal), Smoothing (5 stages), Border Intensity	Clock, Phase, Position, Range Adjustment (Auto), Signal Filter, Screen Size (full screen, enlarge, normal), Smoothing (5 stages), Border Intensity	Clock, Phase, Position, Range Adjustment (Auto), Signal Filter, Screen Size (full screen, enlarge, normal), Smoothing (5 stages), Border Intensity
Brightness, Contrast, Gamma, Temperature (in 500 K increments from 4,000 K – 10,000 K including 9,300 K), Saturation, Hue, Gain, Reset	Brightness, Contrast, Gamma, Temperature (in 500 K increments from 4,000 K – 10,000 K including 9,300 K), Saturation, Hue, Gain, Reset	Brightness, Contrast, Gamma, Temperature (in 500 K increments from 4,000 K – 10,000 K including 9,300 K), Saturation, Hue, Gain, Reset
PowerManager (VESA DPMS)	PowerManager (VESA DPMS)	PowerManager (VESA DPMS)
PowerManager (DVI DMPM)	PowerManager (DVI DMPM)	PowerManager (DVI DMPM)
Signal Switching, Product Information (product name, serial number, resolution, operating time), OSD Menu Settings, Adjustment Lock, DDC/CI Lock, Languages (English, French, German, Italian, Japanese, Simplified Chinese, Spanish, Swedish, Traditional Chinese), Beep, BrightRegulator, Off Timer, Reset	Signal Switching, Product Information (product name, serial number, resolution, operating time), OSD Menu Settings, Adjustment Lock, DDC/CI Lock, Languages (English, French, German, Italian, Japanese, Simplified Chinese, Spanish, Swedish, Traditional Chinese), Beep, BrightRegulator, Off Timer, Reset	Signal Switching, Product Information (product name, serial number, resolution, operating time), OSD Menu Settings, Adjustment Lock, DDC/CI Lock, Languages (English, French, German, Italian, Japanese, Simplified Chinese, Spanish, Swedish, Traditional Chinese), Beep, BrightRegulator, Off Timer, Reset
Dual 0.5 W built-in speakers, input / headphone jacks	Dual 0.5 W built-in speakers, input / headphone jacks	Dual 0.5 W built-in speakers, input / headphone jacks
TCO'03, TÜV/Ergonomics (including ISO 13406-2), TÜV/GS, c-Tick, CE, CB, UL (cTÜVus), CSA (cTÜVus), FCC-B, Canadian ICES-003-B, TÜV/S, VCCI-B, EPA ENERGY STAR <sup>®</sup> , RoHS, WEEE, EIZO Eco Products 2006	TCO'03, TÜV/Ergonomics (including ISO 13406-2), TÜV/GS, c-Tick, CE, CB, UL (cTÜVus), CSA (cTÜVus), FCC-B, Canadian ICES-003-B, TÜV/S, VCCI-B, EPA ENERGY STAR <sup>®</sup> , RoHS, WEEE, EIZO Eco Products 2006	TCO'03, TÜV/Ergonomics (including ISO 13406-2), TÜV/GS, c-Tick, CE, CB, UL (cTÜVus), CSA (cTÜVus), FCC-B, Canadian ICES-003-B, TÜV/S, VCCI-B, EPA ENERGY STAR <sup>®</sup> , RoHS, WEEE, EIZO Eco Products 2006
AC power cord, signal cables (DVI-D – DVI-D, D-Sub – D-Sub), USB cable, audio cable, EIZO LCD Utility Disk (PDF user's manual, ScreenManager Pro for LCD <sup>5</sup> , ICC Profile), setup guide, 4 screws for mount option, warranty registration card	AC power cord, signal cables (DVI-D – DVI-D, D-Sub – D-Sub), USB cable, audio cable, EIZO LCD Utility Disk (PDF user's manual, ScreenManager Pro for LCD <sup>5</sup> , ICC Profile), setup guide, 4 screws for mount option, warranty registration card	AC power cord, signal cables (DVI-D – DVI-D, D-Sub – D-Sub), USB cable, audio cable, EIZO LCD Utility Disk (PDF user's manual, ScreenManager Pro for LCD <sup>5</sup> , ICC Profile), setup guide, 4 screws for mount option, warranty registration card
Five Years <sup>6</sup>	Five Years <sup>6</sup>	Five Years <sup>6</sup>



© 2007 Eizo Nanao Corporation.

FlexScan and EIZO are registered trademarks of Eizo Nanao Corporation.  
Specifications are subject to change without notice.



Published on chlorine-free paper.  
(070501B) Printed in Japan 9, 2007, 1.5K

## EIZO NANAO CORPORATION

153 Shimokashiwano, Hakusan, Ishikawa 924-8566 Japan  
Phone +81-76-277-6792 Fax: +81-76-277-6793  
[www.eizo.com](http://www.eizo.com)

